



SCI Foundation

ANNUAL REPORT 2016

SCI Foundation Summary



As we head into 2017, I'm grateful for the dedicated supporters, volunteers, staff, and partners who champion our First for Wildlife mission. Because it takes more than just smart strategies to make a difference for wildlife—we make the biggest impact when we stand together.

Your time, talents, and treasure shows that you and I share those same values: we care about sustainable use hunting, about wildlife species big and small, and about passing on our hunting traditions to our children and grandchildren.

We continue to strive to fund and direct worldwide programs dedicated to critical wildlife conservation and education and have made a true impact this past year through our many programs, projects, and initiatives. We hope you will stay the course with us as we move into the new year and make the foundation one of your top charitable interests.

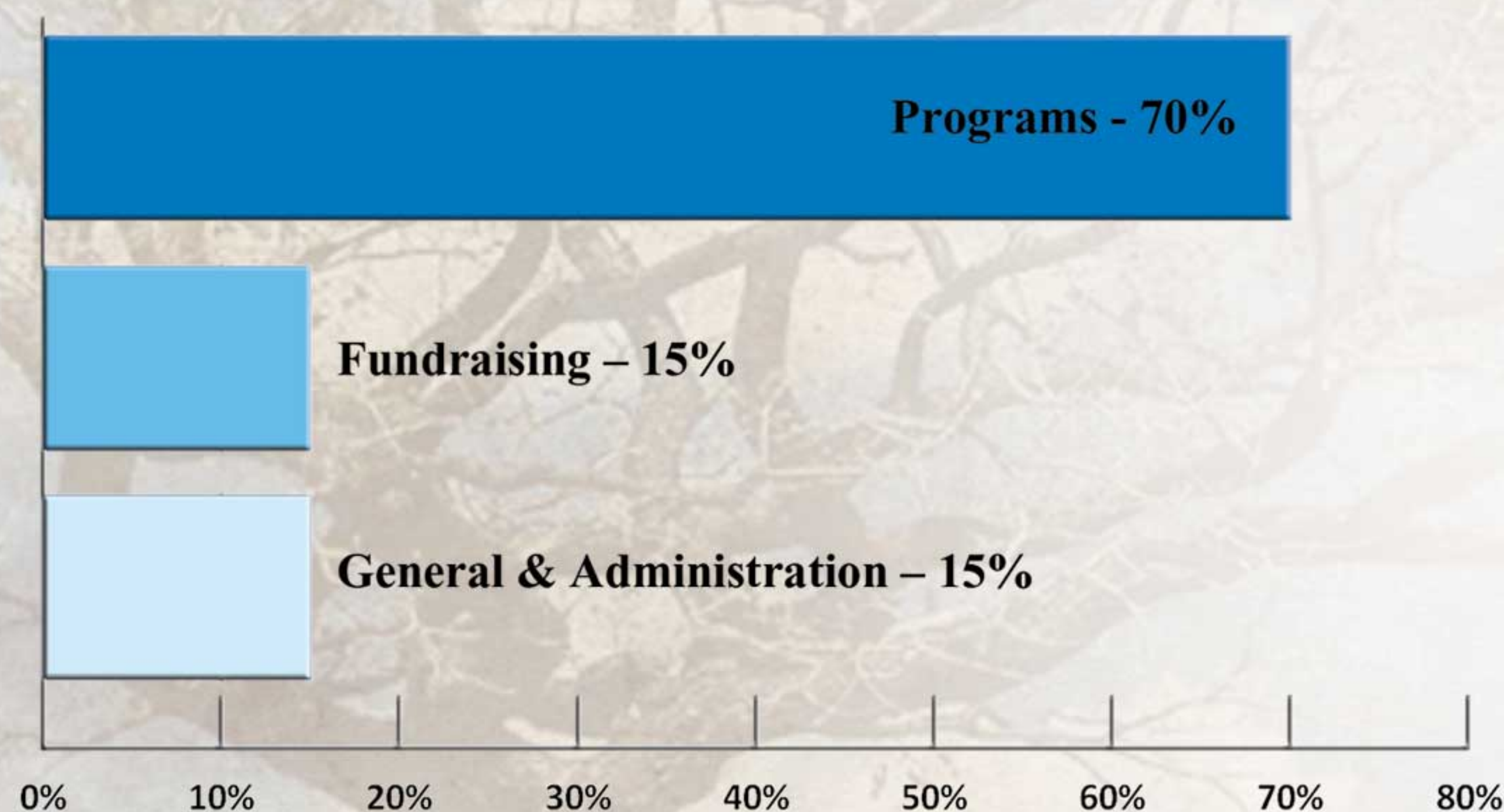
It's people like you who are at the heart of everything we do at SCI Foundation. Thank you for helping us help wildlife and education the next generation about conservation.

May the wonders of nature bring joy to you and your loved ones this holiday season.

First for Wildlife,

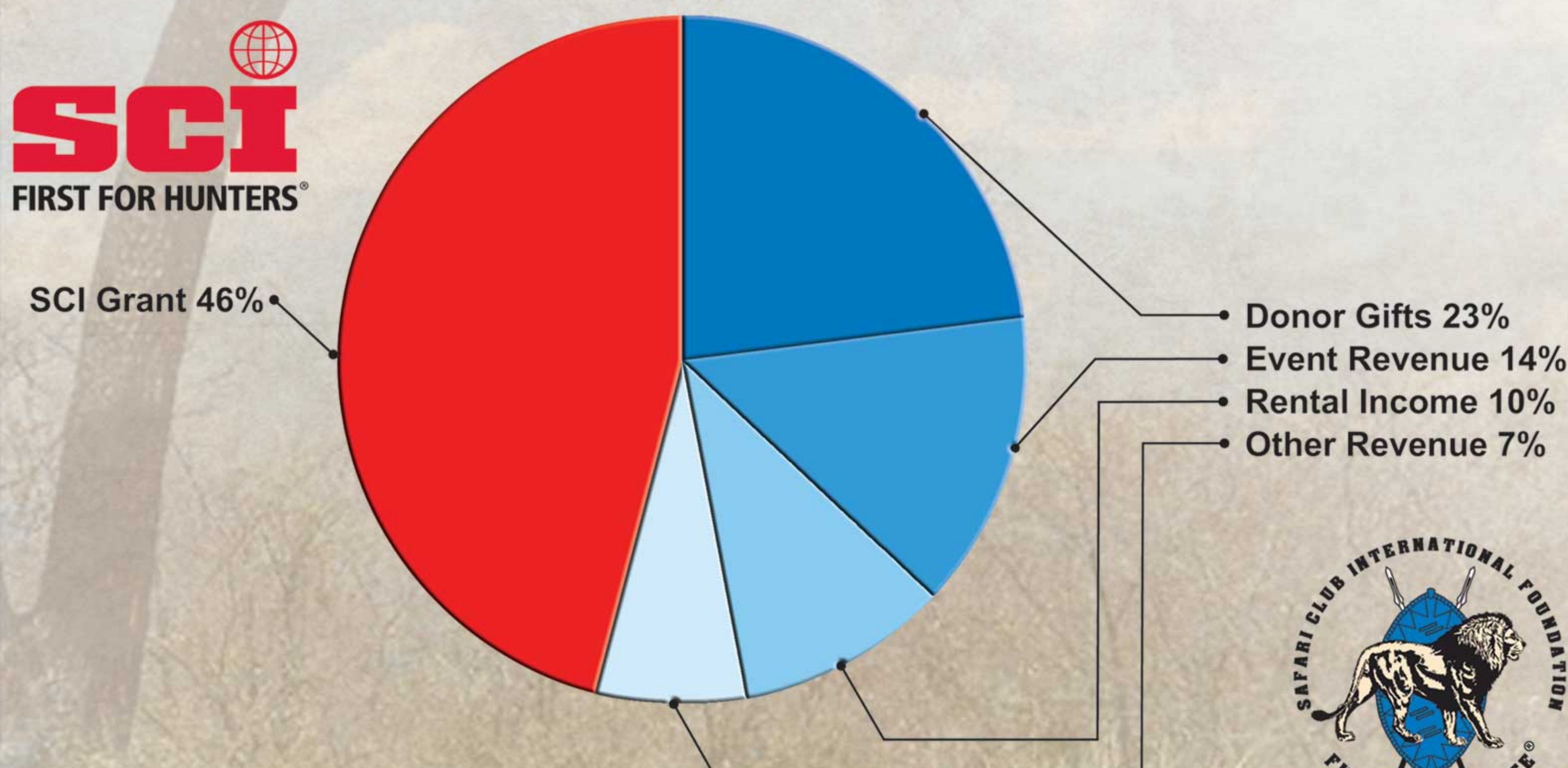
Robert K. Benson, Executive Director
Safari Club International Foundation

Where the Dollars Go *



* A decline in restricted account interest levels had an impact on our overall revenue growth this fiscal year. This was due to a slower economy and modest gains in the stock market. This resulted in a decrease in the program expense ratio and an increase in the G&A percentage. The dollar amount spent on G&A actually decreased, but it was at a lower rate than that of the program expense. The Fundraising ratio increased as the organization works to bring in more revenue for its programs and restricted endowments.

Sources of Support and Revenue



Charity Navigator recently issued SCI Foundation its second four out of four stars rating. The highest possible rating indicates that the group adheres to the sectors best practices and executes its mission in a financially efficient manner.

According to Charity Navigator, the Four Star rating shows that SCI Foundation exceeds industry standards and outperforms most charities in the Conservation area.



Conservation

Funding and directing dozens of priority projects annually

Wildlife Conservation: 2016 Major Accomplishments



CONVENTION FOR INTERNATIONAL TRADE IN ENDANGERED SPECIES 17TH CONFERENCE OF THE PARTIES (CITES COP17)

Safari Club's CITES delegation was successful in helping government partners defend sustainable use at the CoP17 held in South Africa this year. Prior to the conference, SCI Foundation facilitated a strategy meeting in Mozambique for African governments to discuss the major issues and develop cohesive positions. Positive outcomes were met for a number of proposals and species including African lion, hunting trophies, wood bison, Cape mountain zebra, and Western tur. Trade in lion hunting trophies was not affected, and will continue to be permitted. CITES also adopted a formal position on hunting trophies that recognizes the conservation value of hunting.



INTERNATIONAL UNION FOR CONSERVATION OF NATURE (IUCN)

SCI Foundation was formally accepted as a new member of IUCN in 2016. IUCN is the world's largest environmental network and the global authority on species conservation. Membership strengthens SCI Foundation's credibility as a science-based organization through association with this union of scientists and government agencies. SCI Foundation staff attended the IUCN World Conservation Congress in Honolulu in September, a meeting held every four years, to participate in key sustainable use discussions. As a voting member, SCIF helped elect the IUCN Council, which governs the daily workings of the union. Several of the newly elected council members strongly support the principles of sustainable use.

For more recent news and project updates from SCI Foundation's conservation program, please visit the First for Wildlife blog at www.firstforwildlife.wordpress.com. Like us on Facebook or follow us on Twitter and Instagram @SCIFoundation.

Conservation

Funding and directing dozens of priority projects annually

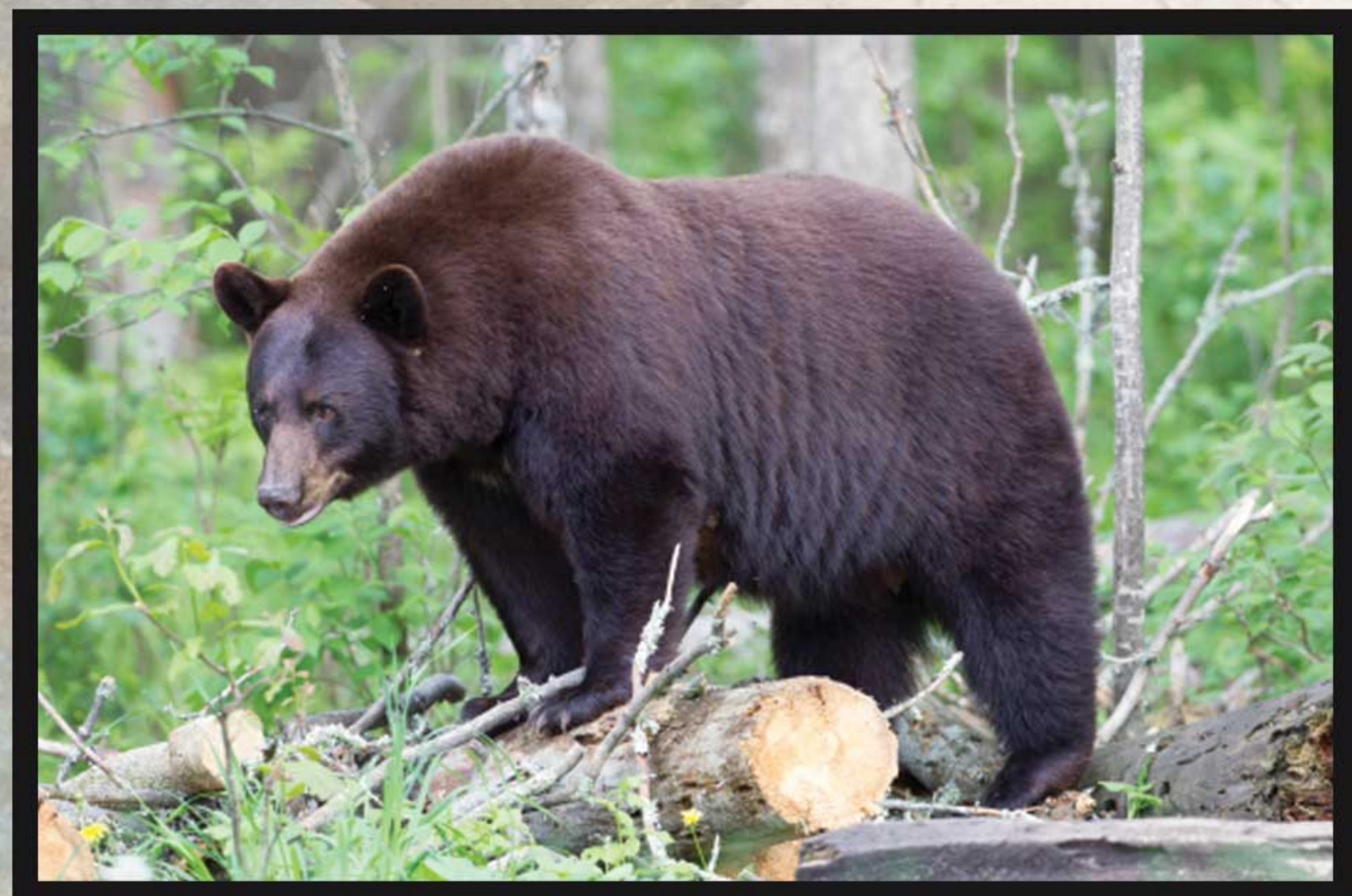
NORTH AMERICA CONSERVATION PROJECTS



The Michigan Natural Resources Commission adopted a resolution commending SCI Foundation for supporting years of research with the Michigan Predator-Prey Project. Research from this decade long project found that white-tailed deer survival in Michigan's Upper Peninsula is dependent on suitable wintering habitat. These findings led to a statewide effort among SCI Chapters, sportsmen, private landowners, and the timber industry to improve habitat in the region. The Michigan Predator-Prey project is SCI Foundation's flagship North American project and a model for collaborative wildlife conservation.

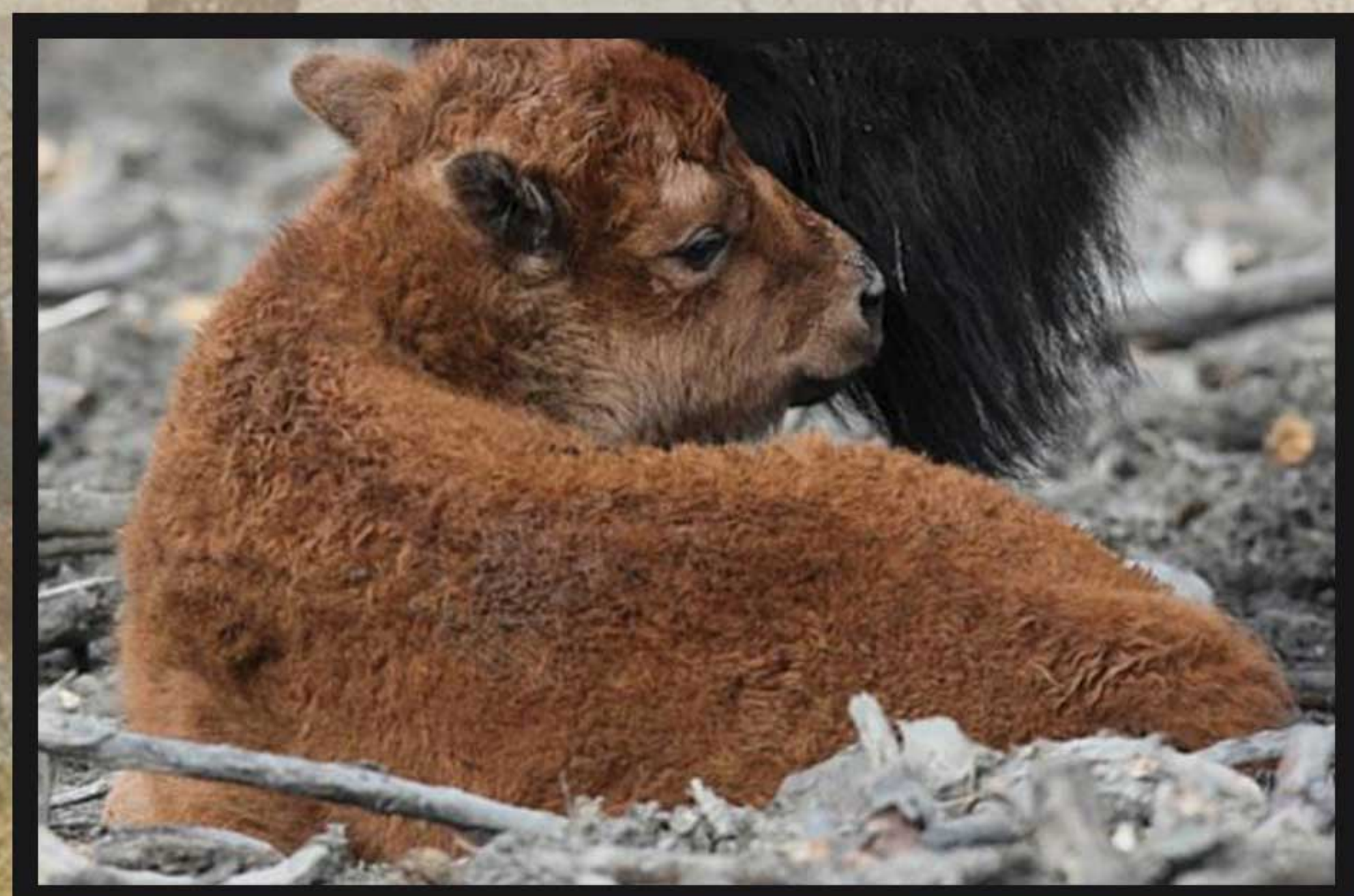


SCI Foundation sponsored and participated in the 24th International Conference on Bear Research & Management in Anchorage, Alaska in June. Biologists from five projects supported by SCI Foundation shared their research findings and discussed potential management implications with the world's foremost experts on bear science. Partners presenting at this year's conference included the Alaska Department of Fish & Game, Kodiak Brown Bear Trust, Mississippi State University Carnivore Ecology Laboratory, and University of Alberta Department of Biological Sciences.



Ongoing black bear research in Missouri is documenting population growth and population demographics, and will inform any future management decisions.

Just over a year after its release into the wild, the Alaska wood bison herd has adjusted well to its new habitat. Bison are in good body condition and 50-60 calves were born this summer.



SCI Foundation recently partnered with Conservation Vision Inc. to support the ongoing Wild Harvest Initiative (WHI). The initiative is a collaborative effort among the hunting and wildlife conservation communities to estimate the nutritional and economic value of recreational wild protein harvest across the United States and Canada. This is the first attempt to examine wild protein on such an immense scale. Understanding the scale of this harvest will reframe the relevancy of hunting in a modern society.

Conservation

Funding and directing dozens of priority projects annually

AFRICA CONSERVATION PROJECTS



Zambia Lion Project:

The Zambia Lion Project made a breakthrough in the science of aging African lions. With a new peer-reviewed and published dental X-ray method, scientists can now accurately determine the age of lions to within 6 months. Harvest of older male lions is accepted as a best practice for hunting. This research will allow wildlife authorities across Africa to improve management of lions and implement sustainable hunting programs.



Tanzania Lion Project:

The Tanzania Lion Project has successfully completed its second field season. The project's first scientific publication, outlining best methods for estimating lion population with call-in surveys, was accepted into the journal Nature: Scientific Reports. The research team plans to publish many more scientific papers in 2017. Next year, the project plans to expand the study area into an adjoining game reserve and nearby Ngorongoro conservation area. Adding new habitat and land management variables will increase the adaptability of the project's methods.



Economic Impact of Hunting

A study by Southwick Associates Inc. commissioned by SCI Foundation showed that hunting-related tourism contributes \$426 million and 53,000 jobs to the economies of eight East and Southern African nations. The report was profiled in Bloomberg Economics, and a summary article "The Conservation Equation in Africa" was developed to communicate the main findings of the study.



A typical hunter visiting Africa spends

US\$7,500

on travel-related expenses such as



Souvenirs



Entertainment



Lodging & meals



In just these eight countries, the economic impact of hunting-related tourism is:

- Direct spending: **US\$326 mil**
- Contribution to GDP: **US\$428 mil**
- Jobs supported: **53,000**

Conservation

Funding and directing dozens of priority projects annually

ASIA CONSERVATION PROJECTS



MARKHOR:

SCI Foundation established a new partnership with the Wildlife Conservation Society's Pakistan Markhor Project. This project seeks to monitor markhor populations, deploy anti-poaching rangers and build capacity within local communities to manage their wildlife. Monitoring provides the government of Pakistan with the science-based population estimates needed to assign hunting permits. Community-based hunting programs are providing incentives for conservation and driving the recovery of the iconic markhor. According to the IUCN, "Stable and increasing populations are restricted to areas with sustainable hunting management. Were these conservation activities to cease in the future, poaching would increase, changing positive trajectories." There are currently 10,000 markhor in the region.

SCI Foundation and the Wild Sheep Foundation have formed a partnership to unify strategies and collaborate on sheep conservation within the US and internationally. The partnership will use the strengths of both organizations to maximize our impact on sheep conservation.

SCI Foundation Recognized as 4-Star Charity



Safari Club International Foundation Earns Coveted Four Star Rating

Charity Navigator recently issued SCI Foundation a new rating of four out of four stars. The highest possible rating indicating the group adheres to the sectors best practices and executes its mission in a financially efficient manner. According to Charity Navigator, the Four Star rating shows that SCI Foundation exceeds industry standards and outperforms most charities in the Conservation area.

Each year, the nonprofit rating agency, Charity Navigator, evaluates charitable organizations based on accountability and transparency metrics as well as on their financial success. In doing so, Charity Navigator uses a fairly complex point system to determine the number of stars a charity has earned during the prior fiscal year. To get to this rating, Charity Navigator takes into consideration an organization's governance structure, policies, and whether or not key information is included on the nonprofit's website. For this, SCI Foundation received a score of 96 out of 100 possible points.

On the financial end, the rating agency looks primarily at an organization's revenue growth and expenses. After reviewing SCI Foundation's performance, the organization received the maximum number of points for its fundraising efficiency and low fundraising expenses.

Currently nearly eighty cents out of every dollar raised by SCI Foundation goes directly to program expenses, promoting wildlife conservation and outdoor education, ensuring sufficient wildlife populations now and educating future generations on how to sustain them. This exceptional designation helps to set SCI Foundation apart from its peers and demonstrates to the public its trustworthiness.

SCI Foundation set a strategic goal to obtain the four star rating and is pleased to achieve this new status as it is a direct reflection of the groups on-going efforts to improve efficiency and generate new revenue to further its mission programs. Our cause is too important for us to rest on our laurels and be satisfied with what we have done. Instead, we must look to the future to see what we can do next to be First for Wildlife.

Education

Developing the next generation of hunter conservationists

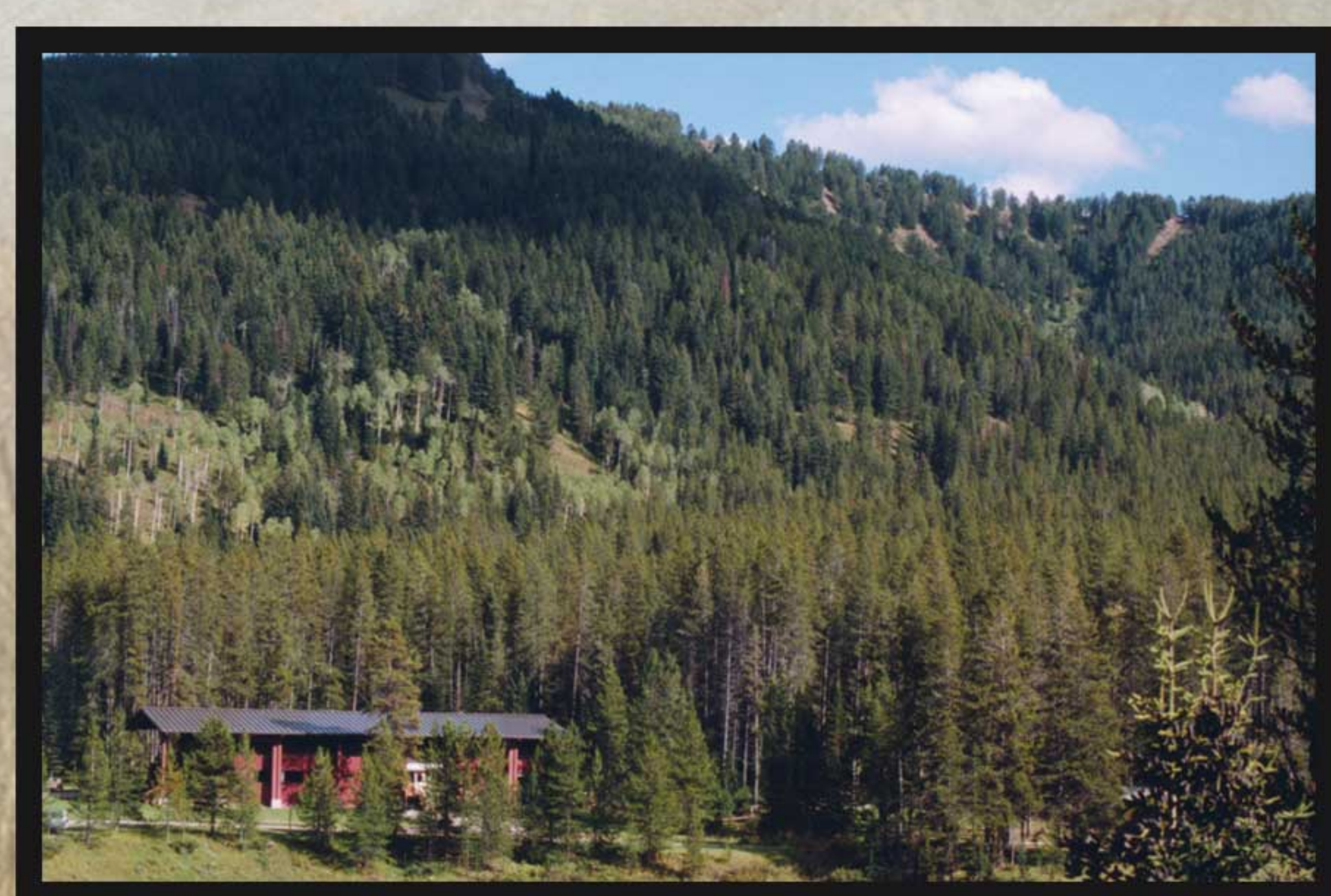
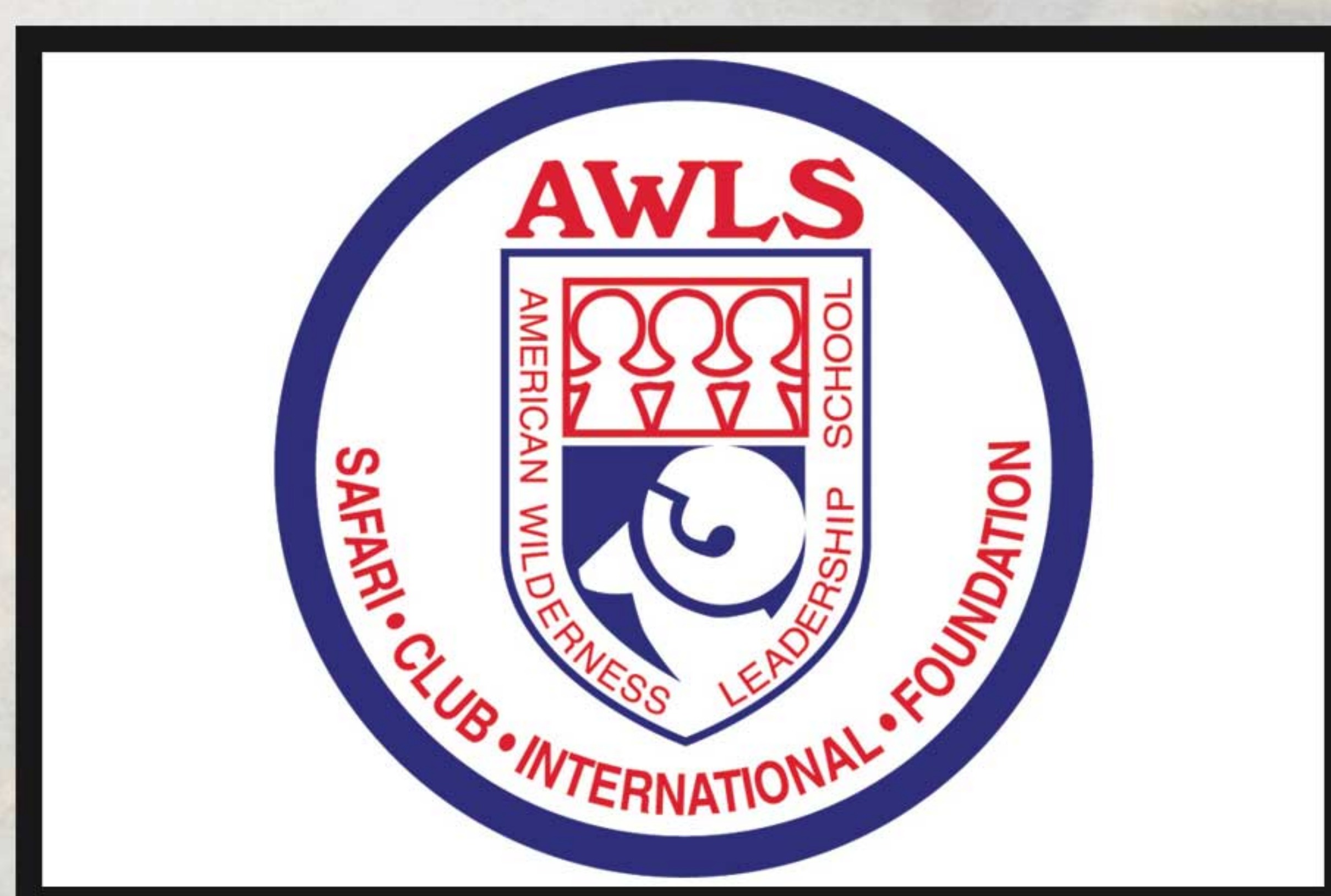
OUTDOOR EDUCATION: 2016 Major Accomplishments



SCI Foundation Education developed training courses and facilitated the training of 500 Salvation Army Outdoors staff to teach conservation lesson, 248 were trained to teach archery and another 24 were trained to teach Explore Bow Hunting. These trained instructors are reaching 160,000 youth each year.

SCI Foundation Education in the past year established a conservation legal advocacy scholarship at the Mitchell Hamline Law School, provided \$18,000 in scholarship funds to the Southern African Wildlife College for students studying conservation management and anti-poaching strategies and provided scholarship funds to sixteen college students majoring in a wildlife ecology field of study.

In 2016, 77% of 2015 teachers that graduated from the American Wilderness Leadership School responded to a survey. Results show that 88% taught a conservation class in the last school reaching 18,952 students. 79% said AWLS helped them to understand the role of hunting in conservation.



International Wildlife Museum

Increasing knowledge of, and appreciation for, the diverse wildlife of the world

INTERNATIONAL WILDLIFE MUSEUM: 2016 Major Accomplishments



With support of SCIF Sables the Conservation Science Adventures program for youth and specific school programs was developed and established reaching more than 500 youth in the trial programs.

46,200 people visited the museum, which has more than 400 species of wildlife exhibited in hands on and diorama presentations.



HUMANITARIAN SERVICES

Working with chapters and individuals to help those in need

HUMANITARIAN SERVICES: 2016 Major Accomplishments



Safari Care – Blue Bag

The bags filled with humanitarian aid have gone to South Africa, West Africa, Zimbabwe, Namibia, Tanzania, Arctic and Yukon, as well as locally in the US to help those in need. This fiscal year SCIF gave out or loaned:

177 – Bell Family Bags

22 – SCIF loaner Bags

70 – Custom bags for chapters, and SCIF bags sold to individuals



Sportsmen Against Hunger 1st Las Vegas Community Meal a Success

SCIF volunteers and staff, along with Salvation Army personnel served a tasty meal of wild game meat to 536 people in need on February 2, 2016. Because of this success, the next Las Vegas Community meal is planned for January 31, 2017.



Hunter Legacy 100 Fund Members

The members of the Hunter Legacy 100 Fund listed below have given generously to endow the SCI Foundation for generations to come. Congratulations to those with the vision and confidence to fund a permanent program such as this.

Anonymous	Robert & Cathy DuHadaway	Michael & Sandra McGinnis	Tim & Kimberly Schnell
William Ainsworth	Greg & Missy Elliott	Brook & Barb Minx	William F. Scott & William F. Scott,
Dennis & Leean Anderson	Bruce & Yvonne Essex	John & Sue Monson	IIBen and Marilyn* Seegmiller
Jim & Rhonda Arnold	Frances & Joseph* Finelli	Susan Moulton	Robert Sergi
David* & Myra Arthur	Dan & Justin Fox	Audrey & Greg Murtland	Ken & Mareek Shemonski
Stan & Pamela Atwood	Kent Greenawalt	John Panettiere	J. Alain Smith
Bill & Cathy Backman	Arturo & Vivian Gutierrez	Robert Parsons	Fernando Soler
Daniel L. Baker	Arturo & Connie Gutierrez	Charlie & Dixie Patterson	Bill & Barbara Strawberry
Irvin* & Wendy Barnhart	Gloria Gutierrez & Donald Gaiter	Danial & Charlotte Peyerker	Ruth & Scott Swasey
Kenneth Barr	Robert & Arlene Hanson	Ray & Diana Phelps	Deborah & Leonard Voyles
Ron & Jackie Bartels	Don & Mary Harter	Bill* & Ingrid Poole Williams	Patrick Wallace
Earl & Janet Bentz	Larry & Lari Hines	Bob Remillard	Dr. Gerald & Margaret Warnock
Gary Bogner	Kevin Hogan	Deborah Remillard	Brian & Denise Welker
Patrick & Nancy Bollman	Patrick Hogan	James A. Richardson	M. Craig West
Jim Boyer	Leon & Patricia Houser	Phil* & Josephine Ripepi	Greg & Kasi Williamson
Armand & Mary Brachman	Mike & Sheila Ingram	Diane Roederer	Buck & Ann Woodruff
Dick* & Mary Cabela	Ross & Nicole Jackson	Luis Rivera-Siaca	R. Douglas Yajko, M.D.
Roger Card	Robert & Pam Keagy	Mike Rogers Sr. & Mike Rogers Jr.	Russell and Debi Young
Larry & Sandra Carlson	Richard & Mark Kessler	William & Bobbi Rowe	
Steve & Terri Chancellor	Dave Kingston	Dr. Lawrence & Bianca* Rudolph	Emeritus Members:
Shane & Sondra Chancellor	David Lau	Alan & Barbara Sackman	Dan* & Jan Duncan
Richard & Judy Childress	Jimmy John & Leslie Liautaud	Sarah Sackman	Emerson Hall*
Stephen & Connie Coale	Jay Link	Warren & Mary Ann Sackman	Theda Hall*
Guinn & Betsy Crousens	Troy Link	Wesley Sackman	Martha & Harry* Hersey
Ralph & Deb Cunningham	Tom & Melany Lipar	Byron & Sandra Sadler	Paul & Phyllis Tibby*
Roman & Diane DeVille	Ricardo Longoria	Ron & Marlys Schauer	Stanton* & Carol Wilson

*Deceased

The names listed above represent members of the Hunter Legacy 100 Fund who have either completed their commitments or are current in their pledge payments



Quantifying the Economic Contributions of Hunting Tourism in Southern Africa (2015-2016) **HLF Investment \$100,000**

HLF 100 funded an 18-month effort to produce a report quantifying hunting tourism's contribution to national economies in Southern Africa. Working with Southwick Associates, SCI Foundation will release a popular report and a journal article March 2016. A media strategy is being implemented to ensure that the information is distributed to the widest audience possible. Major economics magazines are being contacted for media coverage. This report shows estimates that hunting tourism's contributions are higher than previously reported. The report includes hunting's contribution to each country's Gross Domestic Product, income, tax revenue, conservation contributions and jobs. The following countries are included in this report: Ethiopia, Mozambique, Namibia, South Africa, Tanzania, and Zimbabwe.

SCI Foundation Chapter Challenge

Take the Chapter Challenge!

*Support SCI Foundation's
Wildlife Conservation and
Education Programs Today
and Tomorrow!*

*Make a \$10,000 pledge to
SCI Foundation's
First for Wildlife Endowment.
(Pledges may be paid out over multiple years.)*

*Join the 19 chapters that have already
taken the Chapter Challenge:*

*Austin, El Paso, Gateway Area, Greater Atlanta,
Iowa, Lake Superior, Lansing Area, Lehigh Valley,
Louisiana, Louisiana Acadiana, Maine, New York
Tri-State, San Diego, SE Michigan Bowhunters,
South Florida, Southern New Mexico, Texas Brush
Country, and Texas Hill Country Chapters*



*"Together we can make a lasting impact on the
hunting tradition. Don't wait. Make the
Leap today and help us keep the
hunting heritage alive."*

*Warren A. Sackman, III, President
SCI Foundation*

*Larry B. Higgins, President
Safari Club International*

*For more information please contact Kimberly Byers at
kbyers@safariclub.org or (520) 620-1220, ext. 322*



The Society of the Lion and Shield

SCI Foundation's giving program works on a cumulative basis as you move up the animal levels over time. There are many levels and ways to donate as every dollar helps to fund our mission and sustain our organization. Recognition comes from token benefit gifts and acknowledgements.



To learn more, download the Lion and Shield brochure and donation form at www.SafariClubFoundation.org or contact Kimberly Byers at kbyers@safariclub.org or call (520) 620-1220 ext. #322.

GIFT LEVELS AND RECOGNITION

SCI Foundation's Giving Societies provide special recognition to donors for their cumulative giving. Donors are recognized at many different levels for both operational gifts and gifts restricted to the First for Wildlife and AWLS Endowments. Please consider the level that is right for you.

Wolf Level:

\$100 – \$249

Black Bear Level:

\$250 – \$499

Name in Annual Report
SCIF Yearly Donor Certificate



Whitetail Deer Level:

\$500 – \$999

Name in Annual Report
SCIF Yearly Plaque (6" x 8")

SOCIETY OF THE LION AND THE SHIELD

Caribou Level:

\$1,000 – \$2,499

Name in Annual Report
SCIF Plaque (7" x 9")

Elk Level:

\$2,500 – \$4,999

Name in Annual Report
SCIF Plaque (8" x 10")

Cape Buffalo Level:

\$5,000 – \$9,999

Name in Annual Report
SCIF Plaque (8" x 10")

Leopard Level:

\$10,000 – \$24,999

Name in Annual Report
SCIF Plaque (8" x 10")
SCIF Bronze Lion and Shield Pin

Rhino Level:

\$25,000 – \$49,999

Name in Annual Report
SCIF Plaque (8" x 10")
SCIF Silver Lion and Shield Pin

Elephant Level:

\$50,000 – \$99,999

Name in Annual Report
SCIF Plaque (8" x 10")
SCIF Gold Lion and Shield Pin
Boyt Harness Duffel Bag w/SCIF Logo

African Lion Level:

\$100,000+ and up

Name in Annual Report
SCIF Plaque (8" x 10")
SCIF Gold Lion and Shield Pin
Custom Buck Bowie Knife
SCIF "Blue Blazer" and/or
custom brooch



Annual Donors to Safari Club International Foundation

Gifts may be for operational needs or directed to the First for Wildlife or AWLS Endowments. Gifts are recognized cumulatively since the SCI Foundation's realignment date of August 2010. Gifts to the Hunter Legacy Fund 100 Endowment are excluded from the Lion and Shield Society.

African Lion Level (\$100,000+)

Anonymous
Dennis and Leean Anderson
Patrick & Nancy Bollman
Ralph & Deb Cunningham
Roman A. DeVille
Arturo J. Gutierrez, Sr.
Ricardo Longoria
Brook & Barb Minx/The Minx Family Foundation
Audrey and Greg Murtland
Warren & MaryAnn Sackman
Alan & Barbara Sackman
J. Alain Smith
Sports South, LLC
Gerald & Margaret Warnock
Brian & Denise Welker
Buck & Ann Woodruff

Elephant Level (\$50,000 - \$99,999)

Alaska Chapter
Brown Monson Foundation
J.D. Crouch, II
Game Frontiers of Tanzania Ltd.
Lehigh Valley Chapter
Midway USA, Inc.
Steve & Sue Skold
Thomas J. Watson, III
Trijicon, Inc.

Rhino Level (\$25,000 - \$49,999)

Anonymous
Paul D. Babaz
Larry J. Bell
Blue Mountain Chapter
Estate of Wilma A. Buchman
Steven E. Chancellor
Denver Chapter
El Paso Chapter
Flint Regional Chapter
Dan Friedkin
Haas Outdoors Inc./Mossy Oak
Inland Empire Chapter
Adam Jones
Kaan Karakaya
John W. Lake
Lansing Area Chapter
Michigan Chapter
Mid Michigan Chapter
Orange County Chapter
Pittsburgh Chapter
Byron & Sandra Sadler
San Diego Chapter
Albert D. Seeno, Jr.
SE Michigan Bowhunters Chapter
Chanel Smith
Southern New Mexico Chapter
Southwest Washington Chapter
Winston Stalcup
Estate of Ronald E. Thomas
TrackingPoint
Turbine Tool & Gage Inc.
West Texas Chapter
Wisconsin Chapter

Leopard Level (\$10,000 - \$24,999)

Alaska Kenai Peninsula Chapter
Nawaf Alsaud
Stanford & Pamela Atwood
Austin Chapter
Bowhunters Chapter
Armand Brachman
Leona Joan Brown

Leopard Level (\$10,000 - \$24,999) (continued)

Daniel Burkes
J. Virginia Byrum
Cabela's Marketing & Brand Management
Chesapeake Chapter Sables
Colorado Chapter
Combined Federal Campaign
Jim R. Conrad
Guinn D. Crousen
Barbara & Andrew DeGraw
Bob Dill
John M. Floyd
Gateway Area Chapter
Golden Gate Chapter
Greater Atlanta Chapter
W. Laird Hamberlin
Thomas J. Hammond
Larry B. Higgins
Craig Hill
Peter K. Horn, II
Homady Manufacturing Co.
Joseph H. Hosmer
Richard & Bunny Huntley
Independent Charities of America
Michael Ingram
Iowa Chapter
Justgive
Craig & Kisha Kauffman
Lake Superior Chapter
Ronald N. Lanford, DVM
David C. Lau
S. David Leidesdorf, II
Michael J. Leonard
Leupold & Stevens, Inc.
Jerry Lightcap
Louisiana Chapter
Louisiana Acadiana Chapter
Low Country Chapter
Maine Chapter
Page & Grace Mays, Jr.
Minnesota Chapter
Montana Chapter
Morgan Stanley
Susan Moulton
National Capital Chapter
New York Tri-State Chapter
Northern San Joaquin Valley Chapter
Northwoods Chapter
Novi Chapter
Oklahoma Station Chapter
Phoenix Chapter
Ingrid Poole Williams
Brian K. Riddle
Sacramento Chapter
San Francisco Bay Area Chapter Sables
Ronald & Marlys Schauer
Norman D. Schmidt, MD
Doug P. Shelly
C.J. Sibert
Cliff A. Skiles
South Florida Chapter
Sportsmen for Conservation Fund
Larry Steiner
Stephen E. Stockman
Bill & Vicki Swan
Tampa Bay Chapter
Texas Brush Country Chapter
Texas Hill Country Chapter
Treasure Valley Chapter
Leonard Voyles
Dr. R. Douglas Yajko
Mohamed Y. Zahid

Cape Buffalo Level (\$5,000 - \$9,999)

Frank J. Adams
Nancy A. Addison
William P. Ainsworth
Shane Alexander
Jim & Rhonda Arnold
David L. Bahl, Sr.
Banovich Fine Art Gallery
Bellevue Foundation
Clement Benenson
Robert K. Benson
Dr. John B. Blake
Walker F. Broich, III
Harold R. Brown
Dale E. Budzon
Mary Cabela
Angelo M. Caputo
Albert Carlton, Jr.
Central Washington Chapter
Central Wyoming Chapter
Charlevoix County Community Foundation
Chesapeake Chapter
Chicago Chapter
Stephen L. Coale
Larry Coggins
Columbia Basin Chapter
Connecticut Chapter
James W. Crawford, III
Denver Chapter Sables
Detroit Chapter
Drayton Valley Chapter
Robert & Cathy DuHadaway
East Ohio-NW Penn Chapter
Robert Easterbrook, Sr.
Fish & Wildlife Services
Daniel J. Folkman
Rick Frazier
Golden Empire Chapter
Rex R. Goodenow
Edward K. Grasser
Greater Dacotah Chapter
Halliburton
Robert & Arlene Hanson
Don & Mary Harter
Houston Chapter
Einar James Johnson
Kansas City Chapter
Richard Callie Kessler
Chad King
Martin & Veronica Kosich
Tom L. Lillibridge
Los Angeles Chapter
Lubbock Texas Chapter
Alan & Ann Maki
Robert E. Manger
Michel D. Mantheakis
Craig L. Martin
James A. Martin
Mason-Dixon Chapter
Michael McGinnis
John McLaurin
Pat McMillan
Craig Kenneth Meier
Minnesota Outdoor Heritage Alliance
Bill Mitchell
Bernie Mizrahi
Naples-Fort Myers Chapter
National Rifle Association
National Shooting Sports Foundation
NE Wisconsin Chapter
New England Chapter
Lance H. Norris
North Florida Chapter
Northwest Chapter

Cape Buffalo Level (\$5,000 - \$9,999) (continued)

Ross Parker
Russell John Pepper, III
Pineywoods of Deep East Texas Chapter
Thomas L. Place
Eric F. Rebitzer
Donald L. Richard
John Riggs
Paul E. Robey
David J. Romano
David Sandstrom
George F. Schofhauser
Paul Shakstad
Skold Commercial Contracting
Thomas D. Smith
Joseph Smith
Renee Snider
Southwest Montana Chapter
TFG Gage Components
Three State Chapter
Utah Chapter
Patrick Wallace
Bruce W. White
Paul Whitelock
Gary Wiechens
Wollenberg Foundation
Peter Zeliff, Sr.

Elk Level (\$2,500 - \$4,999)

Alabama Chapter
Kevin K. Anderson
Badgerland Chapter
Ron & Jackie Bartels
Robert Brocchini
Donald J. Brown
California Sierra Chapter
CBIZ, Inc.
Chevron Matching Employee Funds Your Cause LLC Trustee
Chisholm Trail Chapter
Kirk Courson
Hank Crouse
Tyler D. Daniels
Monty L. Davis
Michael & Amy Drewnowski
Robert F. Eastman, Jr.
Edward W. Edmonds
Frances N. Finelli
Stephen Finney
Roger Michael Flahive
Four Corners Chapter
Granite Bay Chapter
Grundhofer Charitable Foundation
Susan M. Hankner
George Harms
David Hedman
Ross Hrcir
Al Iftiger
Intelitrans, LLC
Jackson Hole Chapter
Jerome K. Jerome
Keegan, Linscott & Kenon, P.C.
Bruce Keller
A.T. Kersich
Kenneth King
Jon C. Lindbeck
Sherry D. Maddox
Marsh, Inc.
Bradley Martin
Robert J. Merkle
Dan Mersman
Jim Miller
William E. Moritz

Annual Donors to Safari Club International Foundation

(Continued)

Elk Level (\$2,500 - \$4,999) continued

John L. Morris
Gregory Murtland
Napa Valley Chapter
Napoleon Community Schools
Rob Neilson
Ottawa Valley Chapter
Richard Papapietro, Jr.
Scott Petty, Jr.
Brenda Potterfield
Thomas H. Price, III
William Randolph Reglein
Timothy E. Reiger
Bruce Rice
David Y. Rogers
Mike Rogers, Sr.
Fred J. Rowan, II
Rusing Family Fund
San Francisco Bay Area Chapter
Sanctuary II Inc.
Santiam River Chapter
Saskatchewan Chapter
Edward A. Savarno
Dennis Schemmel
Ben & Sandra Seegmiller
Thomas C. Sellin
F. Barry Shaw
Merle A. Shepard
Sioux Empire Chapter
Southwest Ohio Chapter
Paul F. Stannard
Ltc. Rick Steiner
Matthew Sumrow
Tennessee Valley Chapter
Michael Uboldi
Upper Colorado River Chapter
Thomas A. Vining
David C. Wahl
Wayne Webber
West Michigan Bowhunters Chapter
Western Montana Chapter
Pete Widener
Scott Wilson
Wonderful Giving

Caribou Level (\$1,000 - \$2,499)

Aaron K. Adkins
Alamo San Antonio Chapter
George Albright
Allegheny Mountains Chapter
Dr. J. David Allen
Mary Arnoldi
Arthur R. Dubs Foundation
Fred Assaf
Atlanta Beverage Company
Dennis G. Bailey
George S. Barney
Keith Bates
John W. Berry
Donald E. Black
M. William Boller
Curtis Bonner
John Boretsky
Shawn M. Borgeson
McLean Bowman
James T. Brass
Dennis Brenckle
Tim Brewer
Clete T. Brewer
Raul Brito
Robert Terry Britt
Joseph Brown
Lee Browne
W.P. Buckthal
Mark Buglione
Dr. Robert L. Burke
Calgary Alberta Chapter

Caribou Level (\$1,000 - \$2,499) cont.

Canadian Federation of Outfitter Associations
Eric R. Carlson
Michael W. Cassiday
Central Connecticut Chapter
Central Missouri Chapter
Central New Jersey Chapter
Kent A. Chancellor
Scott Chapman
Diann B. Chitwood
Robert E. Clark
Philip Coats
John Colglazier
Ed Curtis
Don W. Dahlgren
Danny Danell
Jim Daubendiek
Mike Davis
Letha B. Davis
Dana C. Dawson
James A. DeBlasio
Delaware Valley Chapter
Philip L. DeLone
Frank N. Derr MD
Desert Chapter
Donald Detwiler
Douglas B. Dewitt-Dick
Jack Dilts
Sead Dizdarevic
Michael E. Dodd
Down Under Chapter
Amy B. Drewnowski
Robert B. Dunkin, II
Aaron Dye
C. Andrew Edwards
Michael T. Egan
Jack T. Ehresman
Terry Eich
Ltc. Harris Chip Emmons, III
Tom L. Engleby
Steven Estes
Kevin G. Fink
Lawrence J. Fischer
William E. Fisher, Jr.
Christy Fleming
Thomas M. Flosnik
Woody H. Fox
Kirt Fredericks
Arthur French
Richard N. Frudaker
Steven Dewitt Fulton
Gary A. Gearhart
Glennon Gingo
Hans Glaser
Michael Gleason
Graphic Media Group, Inc.
Great Plains Chapter
Bob Gregory
Ronald Ray Grenadier
Kent W. Hall, Jr.
Irv Hansen
Ron Harris
Tom Harrison
Gene Hartman
Kevin Hayden
Susan Hayes
Amanda Hayes
Joe Haynes
Dr. Raymond P. Henkel
John M. Hennessy
Rudolf Hesse
Maureen Hewlett
Rusty Hicks
Milburn Hill
Joh R. Hilsinger
Joseph W. Holden

Caribou Level (\$1,000 - \$2,499) cont.

William J. Holmes
Britt Hosmer
Dr. Bruce J. Houle
Kevin Howard
David Howell
James R. Howell
Stacy Huff
Peter Fai Hunt
John W. Hutcheson
Idaho Chapter
Illinois Chicago Chapter
Lorie Ingram
Steven W. Jackson
Clay Janssen
Larry Jarrett
Donald Jefferson
Peter H. Johnson
Lyle E. Johnson
Denis S. Karnosky
Daniel R. Kehoe
Kevin J. Kehoe
Royce K. Keilers
James F. Kenny, MD
Kentuckiana Chapter
Keith Key
Dr. Michael Sean Kincaid
Stacey F. Kleinsmith
Kevin Klumper
Larry Knapp
Byron P. Lange
Kevin Langlois
Las Vegas Area Council BSA
H. James Leboeuf Jr.
Lehigh Valley Chapter Sables
William Liljemark
Karen Elaine Lincoln
Lincoln Land Chapter
Sven K. Lindquist
Robert Lindsey
Jay E. Link
Paul Litz
London Chapter
Lovitt & Touche
Larry L. Lundberg
Peter M. Marino
Mark Matheson
Christopher E. McClain
Tom McDonald
David McMillan
Miami Chapter
Microsoft Giving Campaign
Mid Atlantic Bowhunters Chapter
Mid-Michigan Chapter Sables
Minnesota Chapter Sables
John A. Morris
Tim Mullen
Patrick K. Murphy
Lee D. Murray
Nebraska Chapter
Brent Nelson
Cathie Nelson
Helen S. Netschert
Thomas N. Netschert
New Zealand Hunting.com
Joseph M. Newell
Robert L. North
North Texas Chapter
Northern Nevada Chapter
Northern New Mexico Chapter
Northern Ohio Chapter
Victor Hugo O'Farrill Avila
Ontario Federation of Anglers and Hunters
Outdoor Heritage Foundation of Alaska (OHFA)
William G. Pauley, III
Pebble Limited Partnership

Caribou Level (\$1,000 - \$2,499) cont.

Danial A. Peyerk
Allen W. Preston
Mark S. Proudfoot
Redpine Whitetails, Inc.
Edward W. Reich
Reitzel Foundation Plante Moran Trust
Steven D. Roberts
Kern Roberts
Gene Robertson
Dr. Mark Donald Robinson
Diane Roederer
William A. Rogers
Tom C. Rogers
M. L. Roschelle
San Fernando Valley Chapter
Robert Schimizzi
Kirk Schnitker
Jim Schrack
Ward Schraeder
Paul Schulte
Jerry Scolari
Rodger C. Scott
Paul K. Scripps
Steve Shawley
Kenneth P. Shemonski
John Sholes
Phillip K. Shugart
Gerald E. Smith, MD
Paul H. Snider
State of Wyoming Office of the Auditor
Ronald L. Stearns
T. Garrick Steele
James Stewart
Lisa Stickler
John M. Stiglich
Barbara Strawberry
David A. Stuart
Dr. Steven M. Sullivan
Scott Swasey
Tallahassee Chapter
Mark Teramana
The Conklin Foundation
Thomas Promotions, Inc.
Hubert Thummler
David Tillemans
Laurence Torgerson
Gordon Townsend, Jr.
Louis A. Trama
TRUIST
Robert H. Van Horn
WAHL Clipper Corporation
Nathaniel D. Walton
John Walz
Rick Warren
Washington State Community College
Denny Watkins
Wells Fargo Bank, N. A
David Werkmeister
Pat Werner
Mary Lynn West
David C. West
West Palm Beach Chapter
David Grandjean Wheeler, Jr.
Michael Harrison White
Edwin J. Whitney, MD
Eberhard Woerz
C. Martin Wood, III
Jon J. Ziemann

White-tailed Level (\$500 - \$999)

Adirondack-Catskill Chapter Sables
Jeff R. Alexander
Algonquin Chapter
Jamie Allen, V
Amazon
Clayton Antholz

Annual Donors to Safari Club International Foundation

(Continued)

White-tailed Level (\$500 - \$999) cont.

Maria Araujo
Arkansas Chapter
Tom Arthur
David G. Aul
Said M. Baarma
Alexander Tedford Barclay, III
Terry D. Barnes
Kenneth L. Barr
Deborah J. Barrett
Randy Bauman
Robert C. Benson
Jack C. Bierley
Michael Bollinger
James E. Bond
Mike J. Borel
James L. Bostian
Marrs Bowman, II
Del R. Brady
Michael Brand
Tommy Breaux
Sheila D. Briggs-Snyder
Nelson E. Brown, Jr.
Finley Brunetti
Steve L. Burke
Scott D. Burns
John L. Burrough
Ryan Burt
Rich J. Cabela
Cal Campbell, Sr.
Harvey Carson
Gordon Cashin
David M. Casten
Central Ohio Chapter
Thomas Chagaris
Francis Champagne
John C. Chitwood
Stan Christiansen
John F. Cihak
Frazier Clark
Michael S. Clifford
John S. P. Cochran
Paul H. Coe
Dean Coldiron
Jim Copper
Michael Coppersmith
James W. Cottrell
Kevin Countryman
Millard Cox
Richard Cramer
Addie Crimmins
Barry Cunningham
Phillip C. Dalrymple
Neil Damron
Henry Davidian
Larry Lee Day
Tim Day
Abigail Day
Eduardo F. De Araoz
Eric De Jong
Gary J. De Vries
Andrew DeGraw, Jr.
John Del Signore
Delaware Valley Chapter Sables
Ronald Desideri
Thomas Diehl
B. I. Dippel
Alfred "Skip" Donau
Jay V. Dougherty
Jason Dreisbach
Walter C. Drost
Rick Dubin
Tyrel Dutcher
Eagle Creek Foundation
Robert E. Eastman
Bruce W. Eavenson

White-tailed Level (\$500 - \$999) cont.

Cheri Eby
Spencer F. Eccles
Larry Edginton
Jon Lantz Elliott
Richard Elliott
Hyland B. Erickson, Sr.
Ronald W. Evans
Richard O. Evans
Eric Falkenberg
Mark Farnam
John Fidler
Dean G. Fletcher
David D. Florance
Cheryl E. Foley
Tom L. Forbes
Randy Forburger
Cinderella Forney
Foundation for Roanoke Valley, Inc.
John Franzia, Jr.
Leslie L. Fuller
Gary Gallelli
Juan Antonio Garcia Alonso
Garrett Trucking
William Gill
Eugene Giscombe
James Godbee
Gholam Reza Golsorkhi
Richard Paul Good
Brandon S. Goodwin
Roy Curtis Green
Tracy E. Greenholt
Frank Greiner
Mark H. Gulbrandson
Fredrick C. Gutwein
Ray E. Habelman
Mike Hagen
Catherine A. Haggett
Nelson Hall
Bruce Halle
Joseph J. Hand
John W. Handy
James R. Harding
Wayne C. Harley
David A. Harvey
Marvin Scott Haswell, MD
Hawaii Chapter
Ross Heilman
David Hessler
Frank E. Higgins
High Desert Chapter
Edward J. Holba
John P. Holsbo
Ralph C. Hood, Jr.
Elaine Howard
Dyke Howell
Joseph P. Hughes
Joseph B. Hughes
Milt Hummer
Badr Idbeis
Stephen R. Intemann
Mike Ireland Sr.
John Jackson, III
Robert R. James
Arnold H. Jardstrom
John D. Jennings, III
C. Craig Johnson
Mark D. Johnson
James P. Kane
Lawrence S. Katz
Madleine Kay
John A. Kemhadjian
Steve Kent Sr.
Carl D. Kilhoffer
Jack Klein

White-tailed Level (\$500 - \$999) cont.

Goran Klintmalm
Eugene Knuttila
Martin Kosich, MD
Mark F. Kroger
James H. Lake
W. Bruce Law
C. J. Lensing
Timothy R. Leverenz
Larry S. Lewis
Joseph E. Libby
Steve Lindholm
Brian W. Littleton
Chris F. Longley
Michael Losiniecki
Thomas D. Lund
Rick Macomber
James B. Madison
George F. Madsen
Thomas R. Magill
Edwin H. Magruder, Jr.
Larry Mailliard
Manitoba Chapter
Kearney Martins
Fritz Mast
Greg Maule
Walter Maximuck
Thomas Bard McCord
W. David McGiffert
Wayne R. McNeil
Gene C. McQuown
James McWhorter
Bill Mealer
Rick D. Meritt
Paul Karl Meyer
Jeffrey L. Meyerl
Richard Miklasiewicz
John Miley
Michael J. Miller
Christopher Sean Miller, Sr.
Molly Millis Young
MissionFish
Gail Mitchell
Kenneth R. Moberg
Jene Mobley
Robert Model
Susan B. Monson
Ray Montgomery
Ben Morucci
James H. Mueller
Bruce H. Muenchow
Kendis Muscheid
James H. Nance
NC Triangle Chapter
NE Wisconsin Chapter Sables
Martin W. Nesmith
John A. Nicholson
Richard B. Nilsen
Joe Nobles
Kristin Nordwald
North Country Bowhunters Chapter
North Eastern Ontario Chapter
Zoe Dell Nutter
Ohio Chapter
Olivia Nalos Opre
Gerald L. Otterbacher
Outaouais Chapter
Matt Pandol
Sean Patterson
Mark A. Pavilonis
Fred W. Peters
Charlotte M. Peyerik
Ron Pohl
Kent E. Rains
Chad Ramsey
Danny Ray

White-tailed Level (\$500 - \$999) cont.

Red Deer and District Chapter
Redding Regional Chapter
Damian Redlinski
Tom Regan, Jr.
James Robison
Graham Rogney
Rick M. Rowlands
RR Donnelley
Ronald Duane Rude
Alex B. Russell, Jr.
Johnny Rutherford
Mary Sandkohl
Robert W. Schlemmer, Jr.
Paul Schneider
Marion H. Scott
Phillip Scott
Ralph Scottino
Sandra Seegmiller
Deane S. Shaver
Darrel Shea
Leonard Sheehy
Jack Sheffey
Thomas A. Sherron
Bonnie Shirk
Rita N. Sholton
Mark Shook
Karl Simons
Mike Simpson
Nancy Simpson
Tricia Singer
Jeff Sizemore
Greg V. Smith
Charles H. Smithey, II
Tom Snyder
Rebekah L. Sowers
Geraldine M. Stallman
David J. Stewart
Johannes Stiedl, Jr.
Jerry Storie
Michael J. Storinsky
Dave Sturtz
Sutter Buttes Chapter
David Swinford
Robert W. Sydnor
Debra Tatham
Mike J. Taylor, Jr.
Tony Tedesco
Philip A. Teel
Kenneth Teich
Steve Tippmann
Jeffrey H. Townsend
David M. Trebing
Thomas V. Ulinskask
United Healthcare Services, Inc.
T. Jan Varner
Howard J. Varner
Elaine Vogeler
Larry Waide, V
William L. Walker
Robert Ray Ward
Ryan E. Watts
Mark T. Wehinger
Arno Weiss, Jr.
Western and Central New York Chapter
Dave White
Warren Wiedenhoef
H. David Wilson
J. D. "Des" Woods, Jr.
Michael Woods
Edward D. Yates
Jennifer S. Yuhas
Matthew G. Zaowiak
Luis A. Zapata, Jr.
Dennis Zornig

**Gifts listed here were received from August 1, 2010 to October 30, 2016. Gifts to the Hunter Legacy Fund 100 Endowment are excluded from the Lion and Shield Society*

Foundation Day Events

Join us for Foundation Day January 31st, 2017



BERETTA
500 YEARS. ONE PASSION.



3rd Annual Beretta & SCI Foundation Conservation Leadership Award Gala

January 31, 2017

Mandalay Bay Convention Center
Cocktails 5:45 p.m. ~ Dinner 7:15 p.m.

For more information, contact:
Kimberly Byers at KByers@safariclub.org
(520) 620-1220 Ext. 322

SAFARI CLUB INTERNATIONAL FOUNDATION 5th ANNUAL SPORTING CLAYS SHOOT

Presented by **Krieghoff International**



4 person teams
and individual
shooters welcome!

Ammunition sponsored by



Krieghoff K-80 Parcours

Only 360 TICKETS AVAILABLE

Don't miss this event and the opportunity to support
SCI Foundation mission-related programs.



January 31st, 2017

Clark County Shooting Facility
Las Vegas, Nevada

Individual Registration \$350

Buy sweepstakes tickets for your chance to win - \$100



For registration information, please contact Kimberly Byers at 520-620-1220 ext. 322 or kbyers@safariclub.org

SCI Foundation Officers, Directors, Advisory Board, and Staff



Board of Directors

Warren A. Sackman, III - President
J. Alain Smith - Vice President
Craig L. Kauffman- Corporate Secretary
Ralph S. Cunningham - Corporate Treasurer
Dennis Anderson, Director
Paul D. Babaz, Director
Roman A. DeVille, Director
Skip Donau, Director
Don C. Harter, Director
Ricardo Longoria, Director
John McLaurin, Director
Brook F. Minx, Director
Sandra Sadler, Director
Steve Skold, Director
Richard "Buck" Woodruff, Director

Advisory Board

Nancy A. Addison, Advisor
J. David Allen, Advisor
John Banovich, Advisor
C. J. Buck, Advisor
Deb Cunningham, Advisor
Joseph H. Hosmer, Advisor
Jon Lee, Advisor
Diane Roederer, Advisor
Mike Rogers, Sr., Advisor
Byron G. Sadler, Advisor
Merle A. Shepard, Advisor
C. J. Sibert, Advisor

Executive Administration

Robert K. Benson - Executive Director
Stephanie Carabeo - Executive Assistant

Conservation

Matt Eckert, Director of Conservation
Matthew Lewis, Conservation Manager
Michelle Tacconelli - Conservation Programs & Research Coordinator

Development

Kimberly Byers - Development Specialist
Jordan Hasler – Major Gifts Manager

Education & Humanitarian Services

Susan M. Hankner - Director of Education & Humanitarian Services
Todd A. Roggenkamp - Deputy Director of Education
Dan Brooks – Museum Business Operations Manager
Karen Crehan - Program Coordinator

Marketing and Communications

Dennis L. Treadwell - Marketing & Communications Specialist

Museum

Kathleen Robinson – Museum Education Programs Coordinator
Amy Soneira – Museum Exhibits & Marketing Specialist

Safari Club International Foundation is a Nevada entity formed for wildlife conservation, outdoor education, and humanitarian programs around the world. Any contribution may be tax deductible under Internal Revenue Code section 170(c) as a charitable contribution to the extent permitted by law. Please check with your tax advisor.

EIN 86-0292099.

4800 West Gates Pass Road, Tucson, Arizona 85745 (520) 620-1220 www.SafariClubFoundation.org