

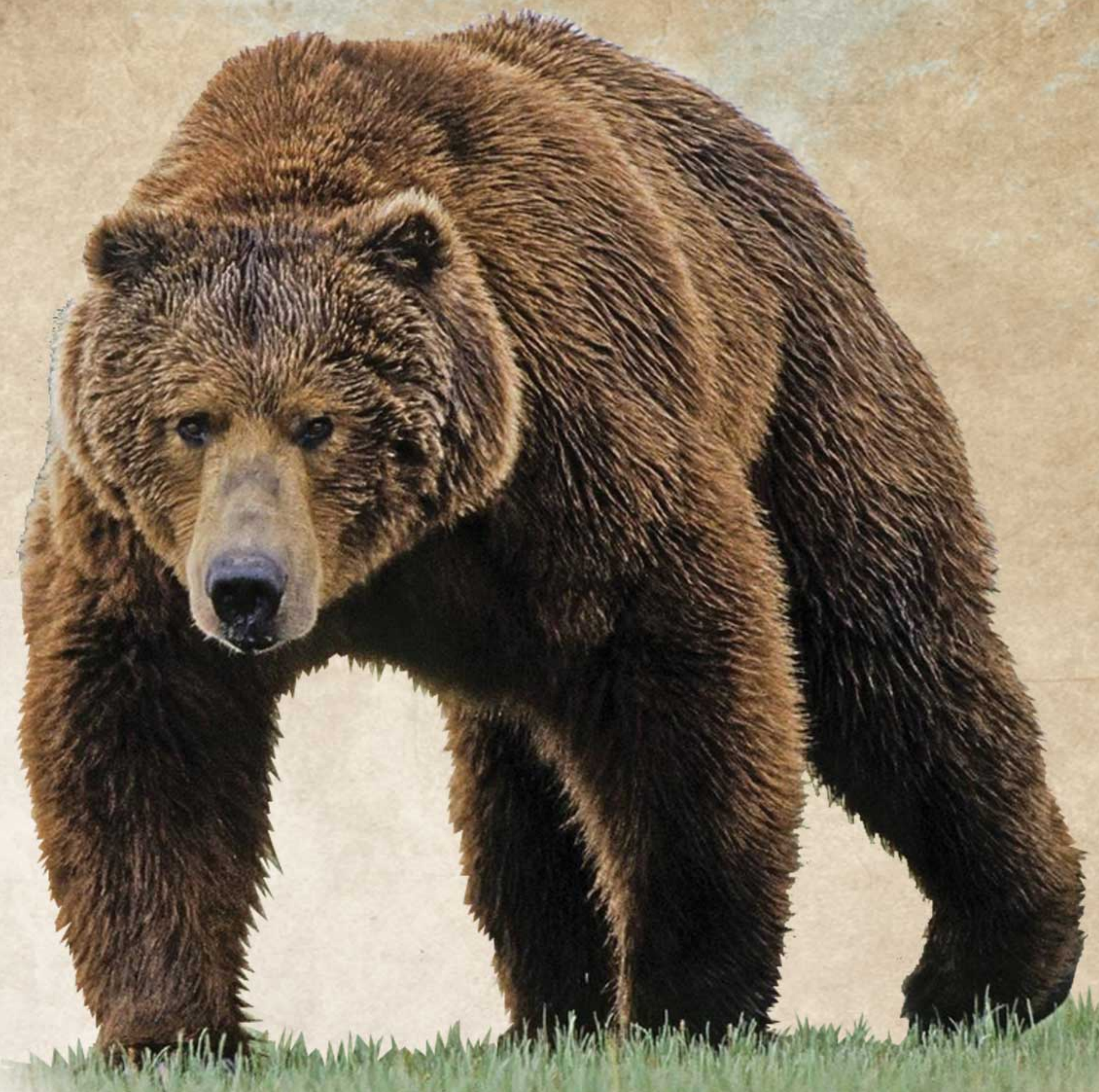


# **SCI Foundation**

## **ANNUAL REPORT 2014**







# SCI Foundation ANNUAL REPORT 2014

It takes a committed team of professionals and volunteers to see SCI Foundation continue to expand its influence and improve its efficiency. Fortunately, we have just that – a dedicated staff and a volunteer leadership group working in concert to ensure that we do all we can to conserve wildlife and educate future generations about the positive impact of hunting.

This year, the team worked to accomplish great results through a wide variety of conservation projects and education initiatives as highlighted in this report. From African Lion studies to anti-poaching partnerships to protecting elephants and rhinos to Argali sheep conservation work in Asia, our international influence is growing. Additionally, we've funded dozens of critical high-priority science-based wildlife research projects in North America.

We continued to develop the next generation of hunter-conservationists through education initiatives this year. We also gave back to the less fortunate via a host of humanitarian service programs by our network of chapters and generous individuals. We keep track of our progress through metric reports and seek to expand educational outreach by providing scholarships, partnering with like-minded groups, and providing tools and training to foster a conservation ethic to all with which we work.

The Foundation team also completed a three-year strategic plan to help provide a road map and timeline of our organizational goals and objectives. These priorities include continued efforts to improve our efficiencies in communication and development work in order to realize our vision to become recognized as the international leader in sustainable-use wildlife conservation and education.

One of the ways that we have improved our communication to members and donors is through the *"First for Wildlife"* bi-monthly e-newsletter and by authoring a higher frequency of SCI Foundation articles and ads in SCI publications. We hope you have noticed and encourage you to take the time to learn more about our work by reading these updates and sharing them with others.

Please consider a meaningful way to help support SCI Foundation – such as making a gift to the Lion and Shield Society or First for Wildlife Endowment or attending our events at the 2015 SCI Convention.

Thank you for your shared passion for hunting and interest in this very important cause.

First for Wildlife,

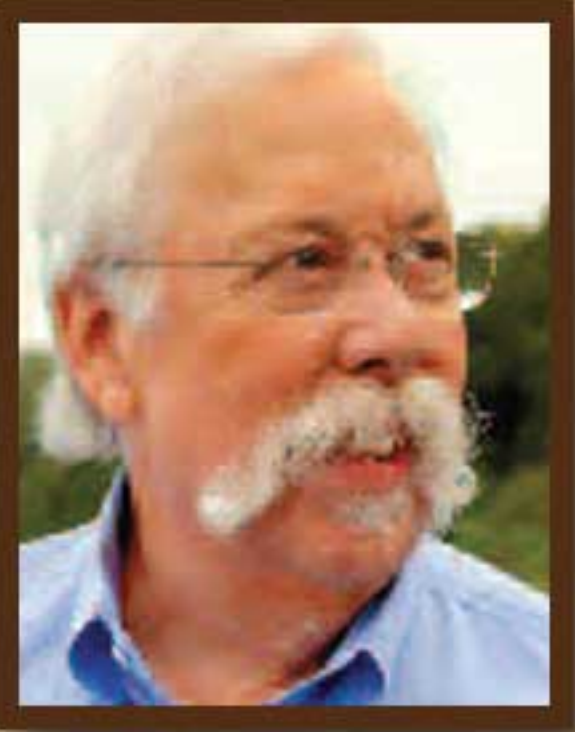
Joseph H. Hosmer, President  
Safari Club International Foundation

Robert K. Benson, Executive Director  
Safari Club International Foundation





# 2013-2014 SCI Foundation Officers



## **SCI Foundation President Joseph Hosmer**

Joseph Hosmer, President of SCI Foundation, is an SCI Life member and has been active in the organization since 1994. A member of several SCI chapters, Joseph served on the SCI Board of Directors in various capacities from 1996 until he became SCI Foundation President. He has been a member of the CITES CoP delegation and served on the SCI Executive Committee as a Vice President or Treasurer for seven years. Joseph also received President's Awards from SCI Presidents John Monson, Dennis Anderson, and Larry Rudolph.



## **SCI Foundation Vice President Roman DeVille**

Roman DeVille is the Vice President of SCIF, a Life Member of SCI and OVIS, a Director of SCI Foundation, a founding member and Director of the Greater Atlanta Chapter of SCI, former Director and present Member of the Georgia Chapter, and a member of the Palm Beach Chapter. Roman is also a member of the Conservation Committee, Bylaws Committee, and Event Committee, and the Task Force Chairman of the SCI Foundation/Boy Scouts Pre Convention Shoot Committee. Roman has hunted 16 African, 8 Asian, 7 European countries and extensively in the South Pacific, North America and South America, Canada and Mexico, harvesting 331 species and earning the World Hunting Award Ring of SCI, the Triple Slam Award ring of OVIS and the Third Level of the Ullmann Award for European Animals. He was honored to be part of the SCI Foundation Task Force at the 2012 International Congressional Conservation Foundation in Washington, DC. Roman and his wife Diane have 4 children and 5 grandchildren, and Roman is retired from the practice of law in Atlanta, Georgia and from his parallel careers in Banking and Real Estate.



## **SCI Foundation Treasurer Warren Sackman**

Warren Sackman's passion for hunting began at a young age alongside his father in the woods of upstate New York. He has been a board member of the Hunter Legacy Foundation (HLF 100) for the past three years. Aside from being SCI Life Member #307 he is also a member of SCI Quarter Century Club, Hunter Legacy 100, Shikar Safari Club, Life member of the NRA, Life member of NAEBA, Life member of the Rocky Mountain Elk Foundation, member of Ducks Unlimited and member of U.S. Sportman's Alliance.



## **SCI Foundation Secretary J. Alain Smith**

J. Alain Smith is a hunter, writer, businessman whose success has allowed him to venture to all points of the globe in search of hunting adventures. He has collected over 300 different species from around the world. He has written several hunting books and one novel with all the proceeds from the sales going to Conservation projects with SCI Foundation and GSCO. Alain believes that we as hunters all need to give something back to our sport, through volunteering our time, investing our money and being proactive in making sure our rights as hunters are protected.



## **FOUNDATION BOARD OF DIRECTORS**

### **Foundation Directors**

Dennis Anderson  
Paul D. Babaz  
Ralph S. Cunningham  
Donald Detwiler  
W. Laird Hamberlin  
Ricardo Longoria  
John McLaurin  
Brook F. Minx  
Mike Rogers, Sr  
Steve Skold  
Richard Woodruff

### **Advisory Board Members**

Nancy A. Addison  
John Banovich  
Deb Cunningham  
Diane Delagrange  
Byron G. Sadler  
Sandra Sadler  
Merle A. Shepard  
Norbert Ullmann

## **FOUNDATION STAFF**

### **Executive Administration**

Robert K. Benson - Executive Director  
Stephanie Carabeo - Executive Assistant

### **Conservation**

Melissa Simpson - Director of Hunting Advocacy & Science Based Conservation  
Matt Eckert - Deputy Director of Conservation  
Caroline Jaeger - Conservation Assistant  
Michelle Tacconelli - Conservation Programs and Research Coordinator

### **Development**

Kimberly Byers - Development Specialist

### **Education & Humanitarian Services**

Susan M. Hankner - Director of Education & Humanitarian Services  
Todd A. Roggenkamp - Deputy Director of Education  
Karen Crehan - Program Coordinator  
Stephanie Gary - Program Coordinator

### **Marketing**

Dennis L. Treadwell - Marketing & Communications Specialist

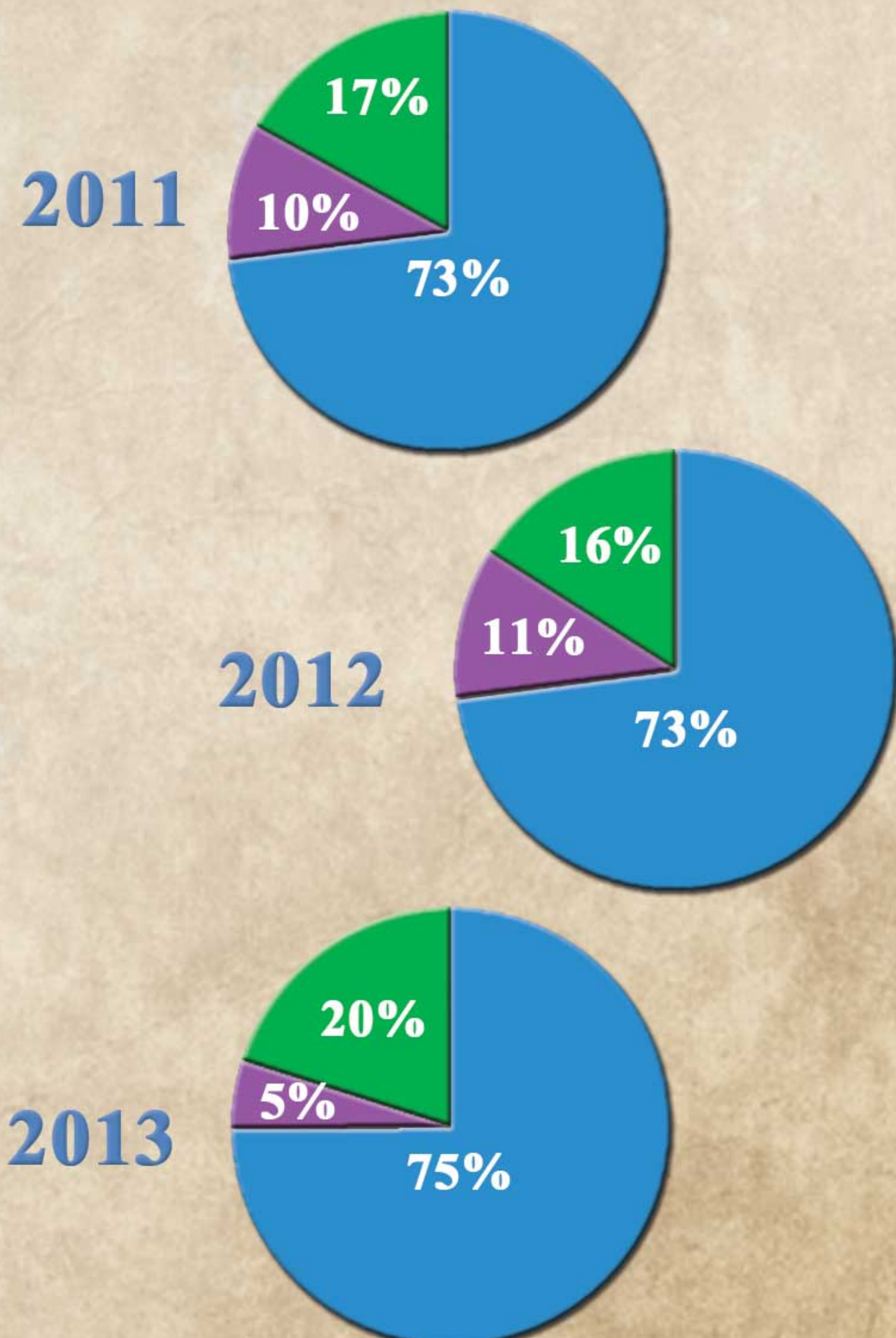
### **Museum**

Richard S. White, Jr - Director of Museum & Facilities  
Kristine Hall - Deputy Museum Director  
Kathleen Robinson - Education Specialist  
Amy Soneira - Exhibit Specialist

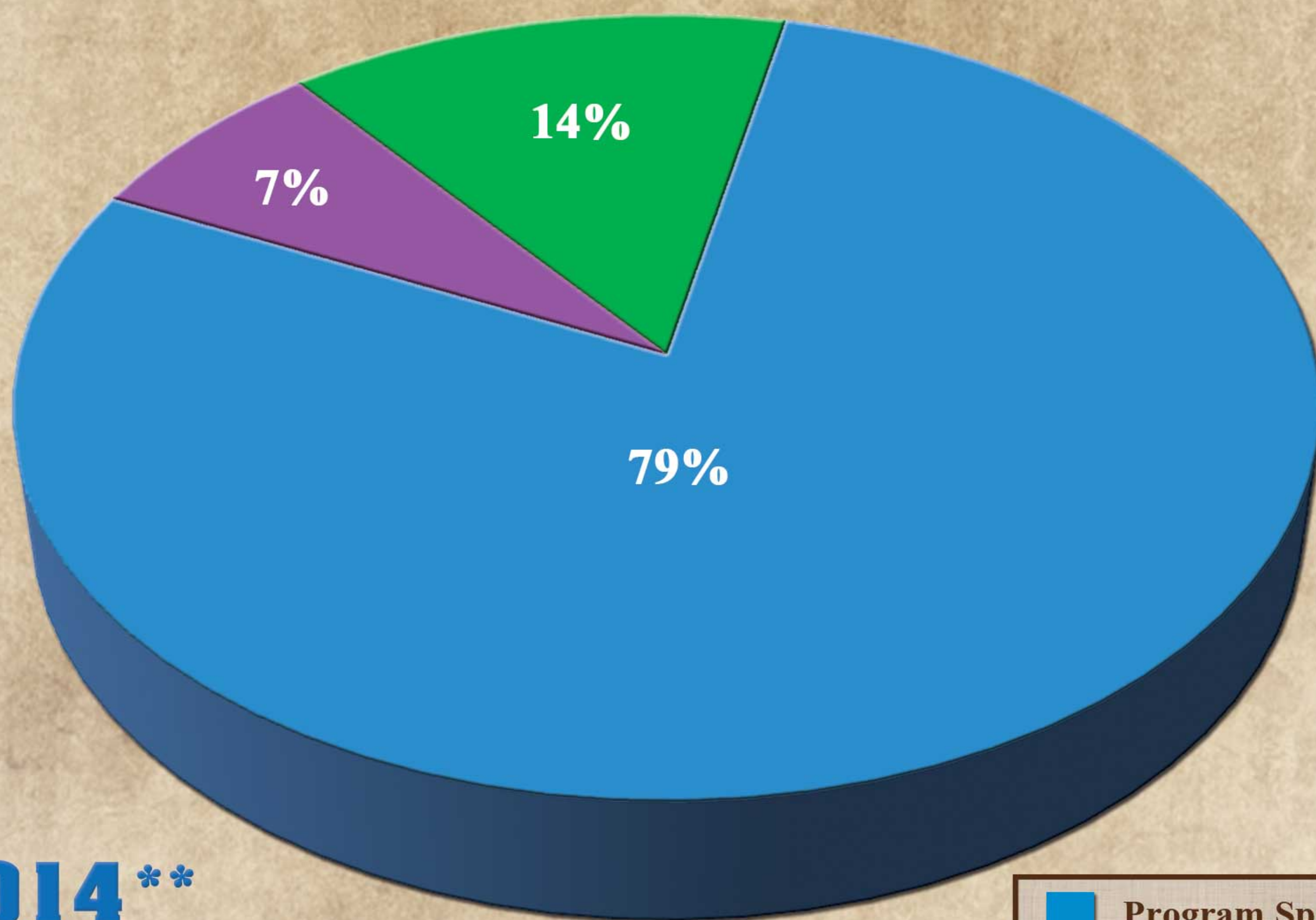


# SCI Foundation Summary

## Expenses Breakdown

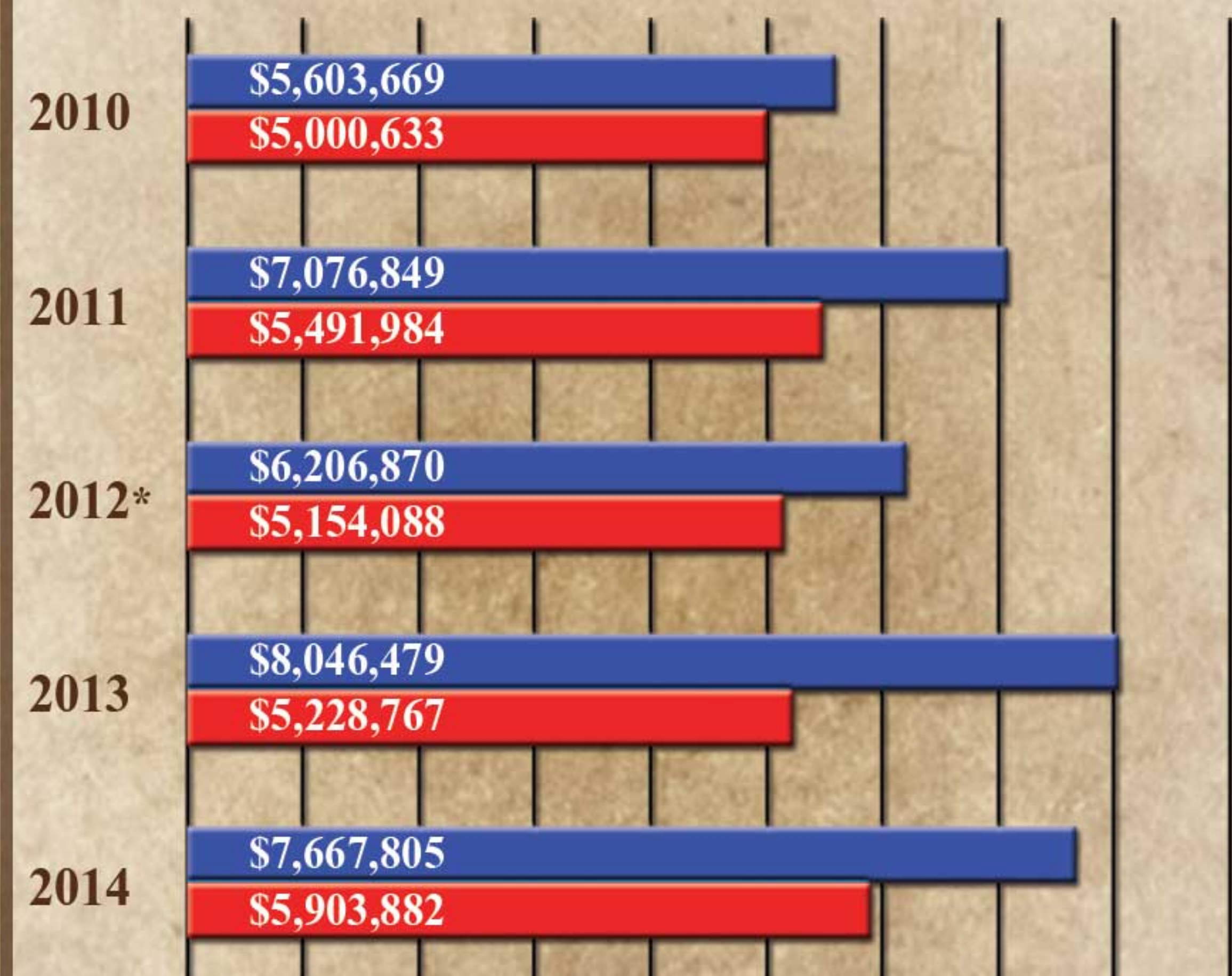


**2014\*\***



## REVENUE

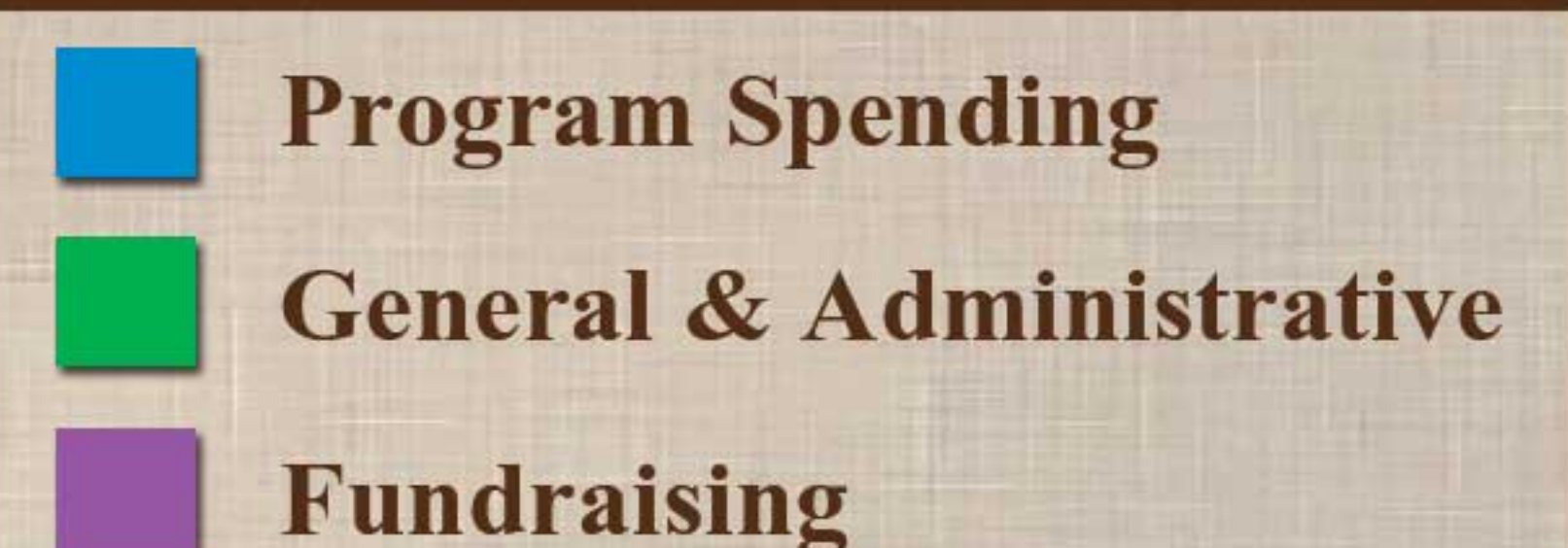
*Includes SCI Grant, Chapter Support, Investment Income and HLF endowment*



## EXPENSES

*Supporting the Mission Programs of SCI Foundation - Worldwide Conservation, Outdoor Education, Humanitarian Services, and International Wildlife Museum.*

\*Does not include revenue or expenses from EPIC Game Fair event. A one-time fundraiser that resulted in a loss.



Net revenue for FY 2014 is due to endowment investment income, which will be used for grants in 2015.  
G&A expenses are: staff costs, materials, meetings and other administrative services to help carry out the mission.  
An expense ratio of <15% in G&A is considered to be exceptional while 15% - 20% is good.



SCI Foundation's conservation efforts provide needed resources that ensure science-based management efforts continue and we are proud of the work that's been accomplished this year.





# Conservation

*Funding and directing dozens of priority projects annually*



SCI Foundation, with the assistance of the HLF 100 Fund, funded five research projects on black and brown bears in Alaska, Alberta, British Columbia, Wyoming and Missouri. The projects seek to explore a range of topics including population density, distribution and impact on prey species.

The five-year Caribou Strategy Research Project, supported by SCI Foundation, came to an end this year. A report created from the research suggests that lethal removal of coyotes could be a viable management option for improving caribou calf survival.



SCI Foundation facilitated discussions between Tajikistan, Kyrgyzstan, and Mongolia and USFWS, in order to mend broken communications between governments. Aiding in the discussions and exchange of information was critical to the approval of trade in sheep with these governments.



SCI Foundation and Education Sables have made great strides educating youth and adults and engaging them in our hunting heritage, ensuring the future of sustainable-use hunting around the world.





# Education

*Developing the next generation of conservationists and empowering educators with the tools to make a difference.*

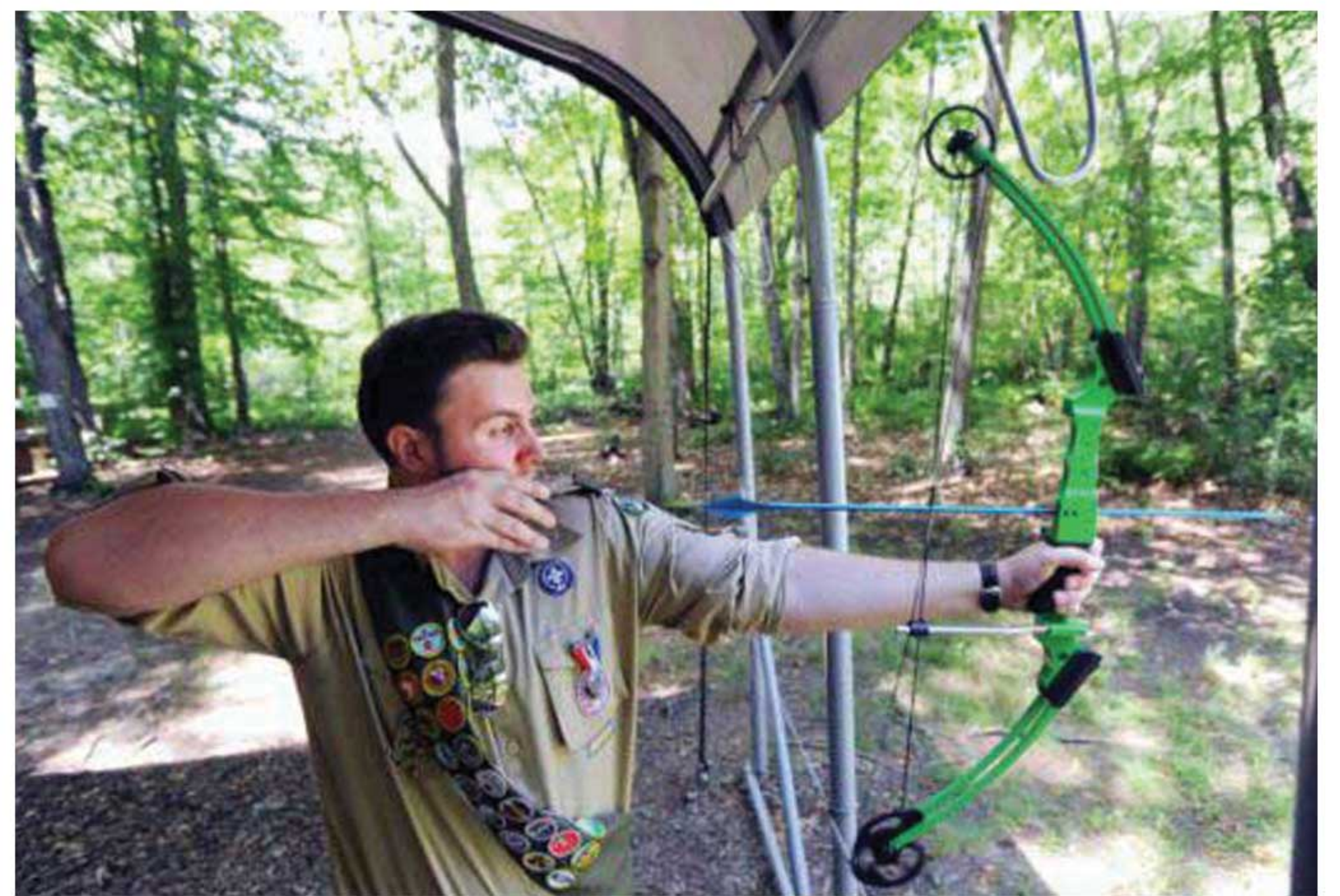


Education Sables have 5 fully endowed \$100,000 college scholarships that have awarded \$57,359 to 26 scholars since 2004.

This past year, another \$26,200 was awarded to 19 college students at 19 separate colleges, and with a grant from the HLF 100 Fund the first international scholarships were established at the Southern African Wildlife College for students majoring in conservation.

A newer youth program partnership with Boy Scouts of America is moving along a similar line of development where BSA volunteers will partner with SCI Chapters in teaching conservation education and the role of hunting and developing shooting sports.

SCI Chapters and Education Sables partner through SCI Foundation grant programs that provide financial support to SCI Chapters that provide programs for youth in their communities. \$118,000 was distributed to these programs this past year.



A youth program partnership between Education Sables and The Salvation Army Outdoors, over the course of the past 4 years trained 383 Army staff to teach conservation education, 203 as archery instructors using the National Archery in the Schools Program, 32 as trainers to train more staff as archery instructors and 89 as Basic Rifle Instructors (BRI).



At SCI Foundation's American Wilderness Leadership School location in Jackson, Wyoming, educators and students learn about conservation, wildlife management, and outdoor recreation through outdoor, hands-on activities.





# American Wilderness Leadership School

*Developing the next generation of conservationists and empowering educators with the tools to make a difference.*



Nestled in the beautiful Bridger-Teton National Forest near Jackson, Wyoming, the American Wilderness Leadership School (AWLS) provides the perfect atmosphere for educational programs.

Established in 1976 with the vision of providing educators with a useful hands-on experience that they can bring home to their classrooms, AWLS has provided an accredited conservation education program for nearly 6,000 teachers who reach more than a million students annually and a challenging experience for 1,700 high school students.



The school offers six teacher sessions and one student session for ages 16-18 in Wyoming. A registration fee of \$900 covers meals, lodging, and round-trip ground transportation to and from the Jackson, Wyoming, airport.

In addition to Wyoming an AWLS teacher program is offered in collaboration with the Iowa Department of Natural Resources at Spring Brook Conservation Center in Guthrie Center, IA.



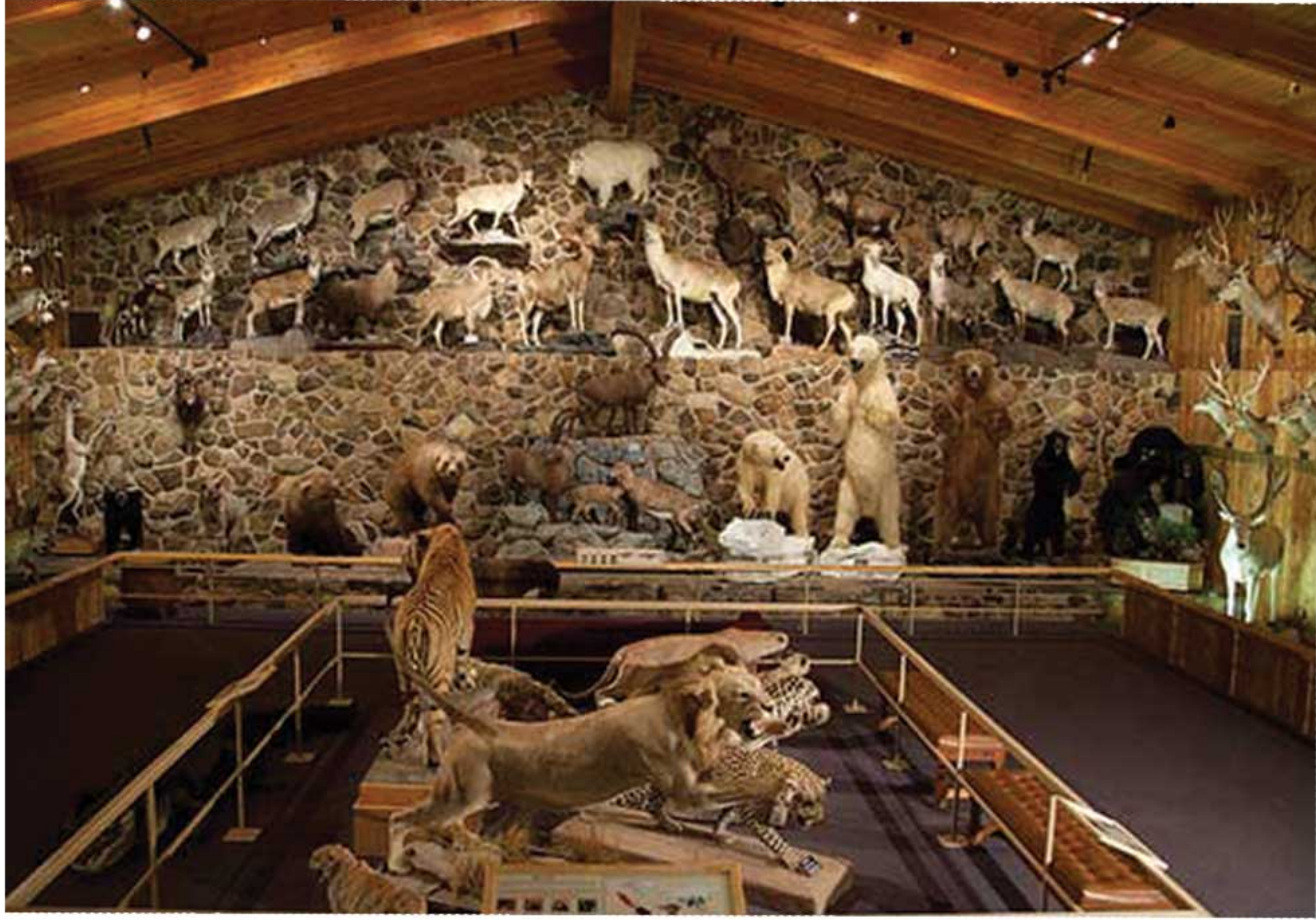
**Exposing visitors to the role of hunting in wildlife management and the role of SCI and SCI Foundation in promoting conservation through 40,000 square feet of exhibit space featuring over 400 species of insects, birds and mammals, and displaying the vast diversity of ecosystems.**





# International Wildlife Museum

*Increasing knowledge and appreciation of the diverse wildlife of the world as well as explaining the role of wildlife management in conservation.*



The museum presented 82 programs to schools, libraries and community organizations focusing on the natural history and conservation of animals throughout the world to participants from preschool to senior citizens, reaching an additional 5,000 people, a 34% increase over last year.

In 2014, nearly 50,000 visitors from all over the world (almost 40% of them children) experienced the exhibits and were exposed to our message.

The museum provides a variety of fun, educational opportunities for families, schools and other organizations.



Hosted special events monthly throughout the year on a variety of subjects to increase the public's awareness and knowledge of the diversity of wildlife from around the world, as well as encourage repeat visitation.



Through a myriad of SCI Chapter-driven humanitarian services programs SCI Foundation, SCI Chapters and individual SCI members demonstrate the highest levels of philanthropy by directly reaching out to people in need throughout the whole world.





# Humanitarian Services

*Working with chapters and individuals to help those in need.*



The Pathfinder program serving disabled hunters and veterans delivered \$76,000 in support of hunting and outdoor activities in 2014. SCI Chapters collectively contributed nearly \$100,000 toward hunts they sponsored.

Veterans Activities for 2014 included the annual Trijicon sponsored Veterans' Breakfast which was attended by 350 veterans.

Safari Care Blue Bags, with the generous support of the HLF 100 Fund, funded 27 filled Blue Bags. Additionally, 71 Blue Bags were delivered to villages around the world to people in need.



Sportsmen Against Hunger program provided 153,413 lbs. of game meat and 65,300 meals to those in need in 2014.

Sensory Safari is hands-on learning supported by SCI Chapters that reached 8,000 adults and 26,000 youth in 2014.

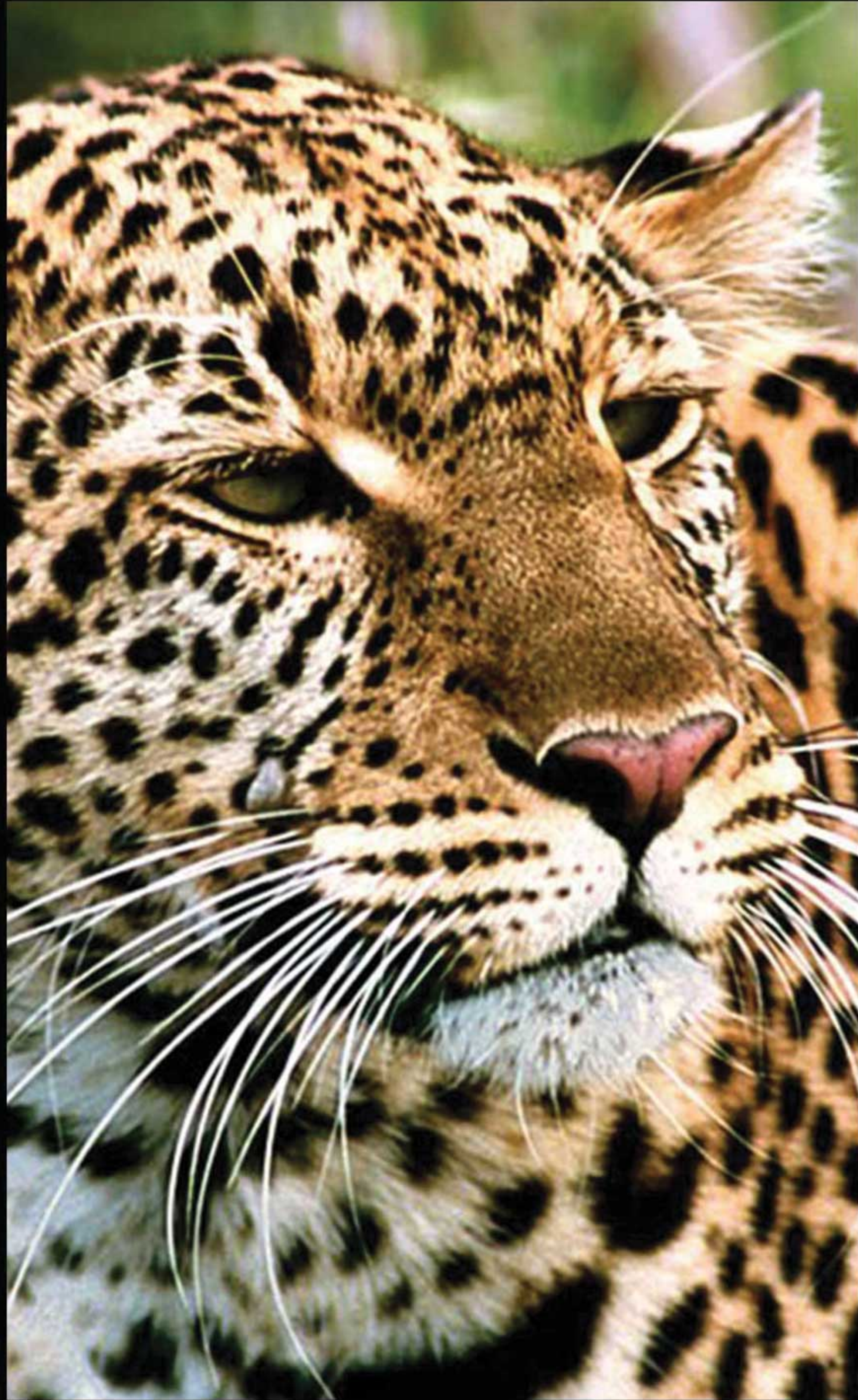




# SCI Foundation Individual Challenge

## ***MAKE THE LEAP!***

*Support SCI Foundation by taking the \$10K Individual challenge,  
and challenge others to do the same.*



*Support SCI Foundation's  
Wildlife Conservation and  
Outdoor Education  
Programs today!*

*Take the Challenge by  
making a \$10,000 pledge to  
SCI Foundation's  
"First for Wildlife Endowment."  
Pledges may be paid out over multiple years.*

*Join* the others that have already taken  
\$10,000 the challenge:

*Jim Conrad,  
Barbara & Andrew DeGraw,  
Michael J. Leonard,  
and Doug P. Shelly*

*"Together we can make a lasting impact on the  
hunting tradition. Don't wait. Make the  
Leap today and help us keep the  
hunting heritage alive."*



*Joseph H. Hosmer, President  
SCI Foundation*

*Craig L. Kauffman, President  
Safari Club International*

*For more information please contact Kimberly Byers [kbyers@safariclub.org](mailto:kbyers@safariclub.org)  
or (520) 620-1220, ext. 322*



# The Importance of the Lion and shield

There are many ways to support SCI Foundation. Among them is the Society of the Lion and Shield.

SCI’s original logo, the Lion & Shield, was created in 1972, redesigned with minor changes in 1995 and remains our official logo. The significance of the items depicted in that logo are important.



The shield expresses defense of our rights as hunters. The crossed spears represent our willingness to fight to protect those rights. The lion, of course, depicts our courage in that endeavor.

In keeping with the significance of the Lion and Shield logo, SCI Foundation’s overall giving program is named the Society of The Lion and Shield with the levels of giving based on animal names. The giving program works on a cumulative basis as you move up the levels over time and there are many levels and ways to donate as every dollar helps to fund our mission and sustain our organization. Recognition comes from token benefit gifts and acknowledgements.



**Wolf Level:**  
\$100 - \$249 annual gift



**Black Bear Level:**  
\$250 - \$499 annual gift  
Name in Annual Report  
SCIF Yearly Donor Certificate



**Whitetail Deer Level:**  
\$500 - \$999 annual gift  
Name in Annual Report  
SCIF Plaque (6" x 8")



**Caribou Level:**  
\$1,000 - \$2,499 annual gift  
Name in Annual Report  
SCIF Plaque (7" x 9")



**Elk Level:**  
\$2,500 - \$4,999 annual gift  
Name in Annual Report  
SCIF Plaque (8" x 10")



**Cape Buffalo Level:**  
\$5,000 - \$9,999 annual gift  
Name in Annual Report  
SCIF Plaque (8" x 10")



**Leopard Level:**  
\$10,000 - \$24,999 annual gift  
Name in Annual Report  
SCIF Plaque (8" x 10")  
Bronze Lion and Shield Pin



**Rhino Level:**  
\$25,000 - \$49,999 annual gift  
Name in Annual Report  
SCIF Plaque (8" x 10")  
Silver Lion and Shield Pin



**Elephant Level:**  
\$50,000 - \$99,999 annual gift  
Name in Annual Report  
SCIF Plaque (8" x 10")  
Gold Lion and Shield Pin  
Custom Boyt Harness Bag



**African Lion Level:**  
\$100,000+ annual gift  
Name in Annual Report  
SCIF Plaque (8" x 10")  
Gold Lion and Shield Pin  
Custom Buck knife



# Society of the Lion & Shield

*Society of Special Friends of the Safari Club International Foundation*

The following information has listed individuals, corporations and foundation donors and their giving history as of June 30th, 2014. This giving information lists both restricted and non-restricted gifts to SCI Foundation. A heartfelt thanks goes out to all the donors to SCI Foundation. An additional thank you to those donors not listed for their gifts of time, talent and treasure.

Please contact the SCI Foundation Development Department to find out how to participate in the Society of the Lion & Shield recognition program. Operational gifts and gifts given to the First for Wildlife Endowment since August 2010 are recognized cumulatively. Visit [www.safariclubfoundation.org/give](http://www.safariclubfoundation.org/give) to see the different level and benefits associated with each. Please consider the level that is right for you.

## **African Lion Level**

**\$100,000 +**

Anonymous

Sports South, LLC

## **Elephant Level**

**\$50,000 - \$99,000**

Roman A. DeVille

## **Rhino Level**

**\$25,000 - \$49,000**

Alaska Chapter

Dennis Anderson

Steven E. Chancellor

El Paso Chapter

Arturo J. Gutierrez, Sr.

Lansing Area Chapter

Lehigh Valley Chapter

Warren A. Sackman, III

J. Alain Smith

## **Leopard Level**

**\$10,000 - \$24,999**

Nawaf Alsaud

Paul D. Babaz

Blue Mountain Chapter

Cabela's Marketing & Brand Management

Chesapeake Chapter Sables

Jim R. Conrad

Ralph and Deb Cunningham

Barbara DeGraw

Denver Chapter

Flint Regional Chapter

Gateway Area Chapter

Haas Outdoors Inc./Mossy Oak

Richard L. Huntley

Inland Empire Chapter

Michael J. Leonard

Jerry Lightcap

Page Mays

Michigan Chapter

Mid Michigan Chapter

Brook F. Minx

Susan Moulton

National Capital Chapter

New York Tri-State Chapter

Northern San Joaquin Valley Chapter

Northwest Ohio Chapter

Orange County Chapter

Sandra SadlerSan Diego Chapter

SE Michigan Bowhunters Chapter

Doug P. Shelly

Steve Skold

South Florida Chapter

Winston Stalcup

Bill S. Swan

Texas Brush Country Chapter

Texas Hill Country Chapter

The Greater Atlanta Safari Club

Treasure Valley Chapter

Turbine Tool & Gage Inc.

Wisconsin Chapter

Richard Woodruff

Mohamed Y. Zahid

## **Cape Buffalo Level**

**\$5,000 - \$9,999**

Nancy A. Addison

Adirondack-Catskill Chapter

Alaska Kenai Peninsula Chapter

Arizona Chapter

Clement Benenson

John Blake

J. Virginia Byrum

Angelo M. Caputo

Chicago Chapter

Stephen L. Coale

Detroit Chapter

Golden Gate Chapter

Edward K. Grasser

Larry B. Higgins

Craig Hill

Joseph H. Hosmer

Craig L. Kauffman

Veronica M. Kosich, Esq.

Llagas Foundation

Los Angeles Chapter

Low Country Chapter

James A. Martin

Grace M. Mays

Montana Chapter

Morgan Stanley

NE Wisconsin Chapter

Northwoods Chapter

Novi Chapter

Oklahoma Station Chapter

Phoenix Chapter

Pittsburgh Chapter

Donald L. Richard

David J. Romano

Sacramento Chapter

San Francisco Bay Area Chapter Sables

Southern New Mexico Chapter

Tampa Bay Chapter

TFG Gage Components

West Texas Chapter

Wollenberg Foundation

## **Elk Level**

**\$2,500 - \$4,999**

Shane Alexander

Robert K. Benson

Raul Brito

Central Wyoming Chapter

Chesapeake Chapter

Colorado Chapter

Columbia Basin Chapter

Connecticut Chapter

Hank Crouse

Drayton Valley Chapter

East Ohio-NW Penn Chapter

Robert F. Eastman, Jr.

Edward W. Edmonds

Frances N. Finelli

Stephen Finney

Roger Michael Flahive

Rew R. Goodenow

Greater Dacotah Chapter

Halliburton

Susan M. Hankner

Intelitrans, LLC

Jerome K. Jerome

Kansas City Chapter

Denis S. Karnosky

Keegan, Linscott & Kenon, P.C

Lake Superior Chapter

Ricardo Longoria

Lubbock Texas Chapter

Robert E. Manger

Craig L. Martin

Mason-Dixon Chapter

Napa Valley Chapter

Naples-Fort Myers Chapter

North Florida Chapter

Northwest Chapter

Pineywoods of Deep East Texas Chapter

William Randolph Reglein

Fred J. Rowan, II

Sanctuary II Inc.

F. Barry Shaw

Sioux Empire Chapter

Southwest Washington Chapter

Sportsmen for Conservation Fund

Three State Chapter

Michael J. Uboldi

Utah Chapter

Pete Widener

Scott Wilson

## **Caribou Level**

**\$1,000 - \$2,499**

Alabama Chapter

J. David Allen

George S. Barney

Larry J. Bell

Curtis Bonner

Shawn M. Borgeson

McLean Bowman

Clete T. Brewer

Robert L. Burke

Eric R. Carlson

Michael W. Cassiday

Central New Jersey Chapter

Central Washington Chapter

Chevron Humankind Matching

Gift Program

Chisholm Trail Chapter

Paul H. Coe

John Colglazier

Monty L. Davis

Dana C. Dawson

James A. DeBlasio

Denver Chapter Sables

Frank N. Derr, MD

Douglas B. Dewitt-Dick

Sead Dizdarevic

Michael E. Dodd

Michael J. Drewnowski

Amy B. Drewnowski

Robert W. DuHadaway

Aaron Dye

Robert Easterbrook, Sr.

C. Andrew Edwards

Tom L. Engleby

Steven Estes

Kevin G. Fink

Thomas M. Flosnik

Hans Glaser

Golden Empire Chapter

Graphic Media Group, Inc.

Greater Atlanta Chapter

Bob Gregory

Ronald Ray Grenadier

W. Laird Hamberlin

Irv Hansen

George Harms

Ron Harris

Don C. Harter

Milburn Hill

Houston Chapter

James R. Howell

Stacy Huff

John W. Hutcheson



Caribou Level (cont.)

Iowa Chapter  
Lyle E. Johnson  
Peter H. Johnson  
Royce K. Keilers  
A. T. Kersich  
Kenneth King  
Lehigh Valley Chapter Sables  
Robert Lindsey  
Paul Litz  
Louisiana Chapter  
Sherry D. Maddox  
Maine Chapter  
Bradley Martin  
Tom McDonald  
John McLaurin  
Craig Kenneth Meier  
Robert J. Merkle  
Mid-Michigan Chapter Sables  
Minnesota Chapter Sables  
William E. Moritz  
Tim Mullen  
Lee D. Murray  
Audrey Murtland  
Nebraska Chapter  
Joseph M. Newell  
Ontario Federation of Anglers and Hunters  
Ottawa Valley Chapter  
Outdoor Heritage Foundation of Alaska  
Pebble Limited Partnership  
Danial A. Peyerk  
Eric F. Rebitzer  
Redpine Whitetails, Inc.  
Edward W. Reich  
Steven D. Roberts  
David Y. Rogers  
RollGiving  
Barbara L. Sackman  
Byron Sadler  
San Fernando Valley Chapter  
San Francisco Bay Area Chapter  
Santiam River Chapter  
David Sefton  
Merle A. Shepard  
John Sholes  
Paul H. Snider  
James Stewart  
Lisa Stickler  
John M. Stiglich  
Barbara Strawberry  
Matthew Sumrow  
Thomas Promotions, Inc.  
David Tillemans  
Louis A. Trama  
Upper Colorado River Chapter  
Thomas A. Vining  
David C. Wahl  
Wahl Clipper Corporation  
Wayne Webber  
Wells Fargo Bank, N.A.  
David Werkmeister  
Mary Lynn West  
West Michigan Bowhunters Chapter  
Western Montana Chapter  
Edwin J. Whitney, MD  
Gary Wiechens  
Eberhard Woerz  
C. Martin Wood, III

**Whitetail Deer Level**

**\$500 - \$999**  
George Albright  
Allegheny Mountains Chapter  
Jamie Allen, V  
Kevin K. Anderson  
Clayton Antholz  
Maria Araujo  
Tom Arthur  
Austin Chapter  
John W. Babson  
Badgerland Chapter  
Dennis G. Bailey  
Greg Berglund  
John W. Berry  
John C. Bierley  
Donald E. Black  
M. William Boller  
Patrick Bollman  
John Boretsky  
James L. Bostian  
Del R. Brady  
Michael Brand  
Tim Brewer  
Robert Brocchini  
Donald J. Brown  
K. Lee Browne  
Finley Brunetti  
Mark Buglione  
Steve L. Burke  
Scott D. Burns  
Mary A. Cabela  
Calgary Alberta Chapter  
California Sierra Chapter  
Central Missouri Chapter  
Central Ohio Chapter  
Thomas Chagaris  
Francis Champagne  
Diann B. Chitwood  
John C. Chitwood  
John F. Cihak  
Philip Coats  
John S. P. Cochran  
Kevin Countryman  
Kirk Courson  
Richard Cramer  
Phillip C. Dalrymple  
Neil Damron  
Henry Davidian  
Mike Davis  
Larry Lee Day  
Eduardo De Araoz  
Gary J. De Vries  
Delaware Valley Chapter  
Delaware Valley Chapter Sables  
Philip L. DeLone  
Desert Chapter  
Jack Dilts  
B. I. "Chipper" Dippel  
Rick Dubin  
Robert E. Eastman  
Cheri Eby  
Larry Edginton  
Terry Eich  
Richard O. Evans  
Eric Falkenberg  
Mark Farnam

Lawrence J. Fischer  
William E. Fisher, Jr.  
David D. Florance  
Louis J. Foght, Jr.  
Four Corners Chapter  
Woody H. Fox  
Leslie L. Fuller  
Gary A. Gearhart  
William Gill  
Michael Gleason  
James Godbee  
Gholam Reza Golsorkhi  
Roy Curtis Green  
Tracy E. Greenholt  
Frank Greiner  
Fredrick C. Gutwein  
Ray E. Habelman  
John W. Handy  
James R. Harding  
Marvin Scott Haswell, MD  
Kevin Hayden  
Joe Haynes  
Raymond P. Henkel  
David Hessler  
Frank E. Higgins  
High Desert Chapter  
William J. Holmes  
Bruce J. Houle  
Dyke Howell  
Milt Hummer  
Idaho Chapter  
Badr Idbeis  
Stephen R. Intemann  
Mike Ireland, Sr.  
Clay Janssen  
Mark D. Johnson  
James P. Kane  
Kevin J. Kehoe  
Daniel R. Kehoe  
James F. Kenny, MD  
Kentuckiana Chapter  
Keith Key  
Mark F. Kroger  
James H. Lake  
John W. Lake  
H. James Leboeuf, J.r.  
Lincoln Land Chapter  
Steve Lindholm  
Michael Losiniecki  
Thomas D. Lund  
James B. Madison  
Edwin H. Magruder, Jr.  
Ann Maki  
Christopher E. McClain  
Jeffrey L. Meyerl  
Miami Chapter  
Microsoft Giving Campaign  
Henry Casper Mills, II  
MissionFish  
Kenneth R. Moberg  
Ben Morucci  
James H. Mueller  
Bruce H. Muenchow  
Patrick K. Murphy  
NC Triangle Chapter  
Brent Nelson  
Cathie Nelson

Martin W. Nesmith  
New England Chapter  
John A. Nicholson  
North Country Bowhunters Chapter  
North Eastern Ontario Chapter  
North Texas Chapter  
Northern Ohio Chapter  
Zoe Dell Nutter  
Palm Beach Chapter  
Sean Patterson  
William G. Pauley, III  
Red Deer and District Chapter  
Redding Regional Chapter  
Damian Redlinski  
Tom Regan, Jr.  
Gene Robertson  
William A. Rogers  
Ted Rowe  
Robert Schimizzi  
Robert W. Schlemmer, Jr.  
Jim Schrack  
Jerry Scolari  
Rodger C. Scott  
Ben L. Seegmiller  
Deane S. Shaver  
Steve Shawley  
Darrel Shea  
Kenneth P. Shemonski  
Rita N. Sholton  
Mark Shook  
Phillip K. Shugart  
Mike Simpson  
Tricia Singer  
Bill R. Skillman, III

\* Gifts to the Hunter Legacy Fund 100  
Endowment and the Fighting for  
Lions Fund are excluded from the  
Lion and Shield Society

Safari Club International Foundation gratefully acknowledges the donors listed for supporting its mission programs.The giving record reflects history from August 1, 2010 to June 30th, 2014. Our direct apologies for any omissions or inaccuracies or for any information that has been overlooked. Please contact the Development Department with any corrections. Thank you.



# SCI Foundation Chapter Challenge

*Pass on the Hunting Tradition and Heritage.*

## ***TAKE THE CHAPTER CHALLENGE!***

***Support SCI Foundation's  
First for Wildlife Endowment  
Today!***

***Take the Chapter Challenge by  
making a \$10,000 pledge to SCI Foundation's  
"First for Wildlife Endowment."***

*Pledges may be paid out over multiple years.*

***Join*** *the others that have taken the challenge:*

*El Paso, Gateway Area, Greater Atlanta, Lansing Area, Lehigh Valley,  
Maine, New York Tri-State, San Diego, SE Michigan Bowhunters,  
South Florida, Texas Brush Country, and Texas Hill Country Chapters  
and individuals Jim Conrad, Barbara & Andrew DeGraw,  
Michael J. Leonard, and Doug P. Shelly*

***"Together we can make a lasting impact on the  
hunting tradition. Don't wait. Take the  
Chapter Challenge today and help us keep the  
hunting heritage alive."***

*Joseph H. Hosmer, President  
SCI Foundation*

*Craig L. Kauffman, President  
Safari Club International*



***For more information please contact Kimberly Byers  
kbyers@safariclub.org or (520) 620-1220, ext. 322***

*Promote our Mission*

*Sustain our Future*

*Protect our Heritage*



# Hunter Legacy 100 Fund

*The members of the Hunter Legacy 100 Fund listed below have given generously to endow the SCI Foundation for generations to come. Congratulations to those with the vision and confidence to fund a permanent program such as this.*



Anonymous	Roman & Diane DeVille	Troy Link	Warren & Mary Ann Sackman
William Ainsworth	Robert & Cathy DuHadaway	Tom & Melany Lipar	Wesley Sackman
Dennis & LEEAN Anderson	Dan* & Jan Duncan	Ricardo & Josefina Longoria	Byron & Sandra Sadler
Jim & Rhonda Arnold	Greg & Missy Elliott	Michael & Sandra McGinnis	Ron & Marlys Schauer
David* & Myra Arthur	Bruce & Yvonne Essex	Brook & Barb Minx	Tim & Kimberly Schnell
Stan & Pamela Atwood	Dan & Justin Fox	John & Sue Monson	William F. Scott & William F. Scott, II
Bill & Cathy Backman	Kent Greenawalt	Susan Moulton	Ben Seegmiller
Daniel L. Baker	Arturo & Vivian Gutierrez	Audrey & Greg Murtland	Robert Sergi
Irvin & Wendy Barnhart	Arturo & Connie Gutierrez	Archie Nesbitt & Christine Nesbitt	Ken & Mareek Shemonski
Ron & Jackie Bartels	Gloria Gutierrez & Donald Gaiter	John Panettiere	J. Alain Smith
Earl & Janet Bentz	Emerson Hall*	Robert Parsons	Fernando Soler
Gary Bogner	Theda Hall*	Charlie & Dixie Patterson	Bill & Barbara Strawberry
Patrick & Nancy Bollman	Robert & Arlene Hanson	Daniel & Charlotte Peyerck	Ruth & Scott Swasey
Jim Boyer	Don & Mary Harter	Ray & Diana Phelps	Paul & Phyllis Tibby*
Armand & Mary Brachman	Martha & Harry* Hersey	Bill* & Ingrid Poole Williams	Deborah & Leonard Voyles
Dick* & Mary Cabela	Larry & Lari Hines	Bob Remillard	Patrick Wallace
Roger Card	Leon & Patricia Houser	Deborah Remillard	Dr. Gerald & Margaret Warnock
Larry & Sandra Carlson	Mike & Sheila Ingram	James A. Richardson	Brian & Denise Welker
Steve & Terri Chancellor	Ross & Nicole Jackson	Phil & Josephine Ripepi	M. Craig West
Shane & Sondra Chancellor	Robert & Pam Keagy	Luis Rivera-Siaca	Greg & Kasi Williamson
Richard & Judy Childress	Richard & Mark Kessler	Mike Rogers Sr. & Mike Rogers Jr.	Stanton* & Carol Wilson
Stephen & Connie Coale	Dave Kingston	William & Bobbi Rowe	Buck & Ann Woodruff
Guinn & Betsy Crousen	David Lau	Dr. Lawrence & Bianca Rudolph	R. Douglas & Alexandra Yajko, M.D.
Ralph & Deb Cunningham	Jimmy John & Leslie Liautaud	Alan & Barbara Sackman	Russell and Debi Young
Diane Delagrang	Jay Link	Sarah Sackman	

\*Deceased

The names listed above represent members of the Hunter Legacy 100 Fund who have either completed their commitments or are current in their pledge payments



## SCI Foundation's HLF Aid Anti-Poaching Efforts in Tanzania

On December 17, 2014, SCI Foundation's Hunter Legacy Fund (HLF) donated \$100,000 to provide the Wildlife Conservation Foundation of Tanzania (WCFT) with vehicles to be used by anti-poaching patrols. SCI Foundation has outfitted anti-poaching units with two fully equipped Toyota Land Cruisers to monitor the Selous Game Reserve. These new Cruisers will allow teams to locate and track areas most susceptible to poachers.

"I am very sure that the elephants and other wildlife are more secure today and we already see the difference in the bush," WCFT Trustees and Executive Vice President Eric Pasanisi said. "On behalf of the Wildlife Conservation Foundation of Tanzania, I would like to sincerely thank HLF 100 for their generous donation to our fight to preserve our wildlife in Tanzania."



# SCI Foundation Planned Giving

Pass on Your Legacy of Conservation!  
Include SCI Foundation in Your Estate Plan

*Please email or send me information about:*

- ☒ Bequests via my will, trust, or life insurance
- ☒ IRA charitable Rollover at age 70 <sup>1/2</sup>
- ☒ Gifts of Appreciated Stock/Securities



For Information Contact Kimberly Byers  
[kbyers@safariclub.org](mailto:kbyers@safariclub.org) or call  
(520) 620-1220 ext. 322



# Save the Date!

Make "Foundation Day 2016" part of your 2016 SCI Convention plans by attending the 2nd Annual Beretta Conservation Leadership Award Gala and the 4th Annual SCI Foundation Sporting Clays Shoot



## February 2nd, 2016



Safari Club International Foundation is a Nevada entity formed for wildlife conservation, outdoor education, and humanitarian programs around the world.  
Any contribution may be tax deductible under Internal Revenue Code section 170(c) as a charitable contribution to the extent permitted by law.  
Please check with your tax advisor. EIN 86-0292099.

4800 West Gates Pass Road, Tucson, Arizona 85745 (520) 620-1220 [www.SafariClubFoundation.org](http://www.SafariClubFoundation.org)